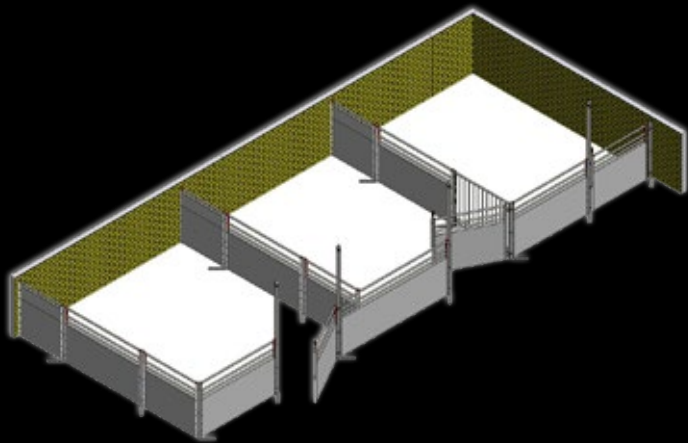




INN-O-FLEX®

Penning equipment for sows and boars



- Flexible pen equipment for sows and boars
- Pipes with 2 solid steel profiles at the bottom for better durability
- Horizontal or vertical upper pipes fit tight to the board profiles
- U-profiles with inwards curved edges reduce risk of manure penetration between U-profiles and board profiles
- Easy to clean

INN-O-FLEX®

Penning equipment for sows and boars

INN-O-FLEX is a flexible penning program for sows and boars. The equipment is 110 cm high and mounted on 5x5 cm galvanized posts. The equipment can be built in 35/40 mm board profiles, 10 mm solid panels, 10 mm fiber plates, or steel plates.

There are vertical or horizontal pipes at the top of the equipment that closes tightly over the board profiles. Besides, stainless steel U-profiles with inwards curved edges reduce the risk of manure penetration between U-profiles and board profiles. It ensures better durability and makes it easier to keep the equipment clean.

FACTS

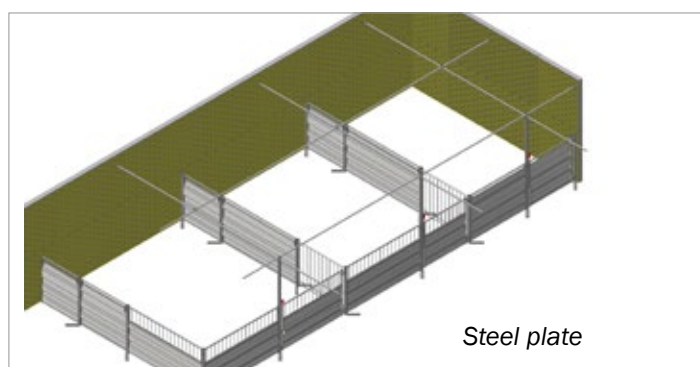
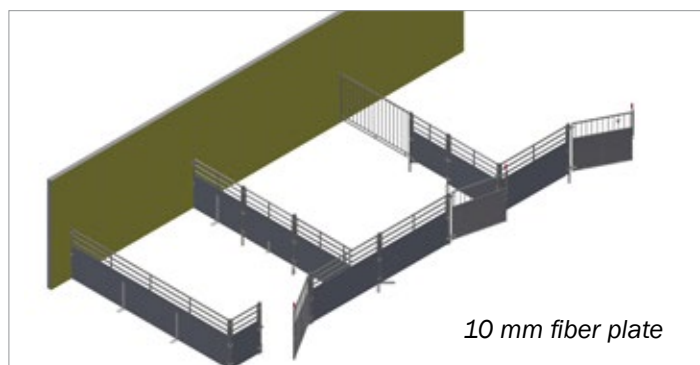
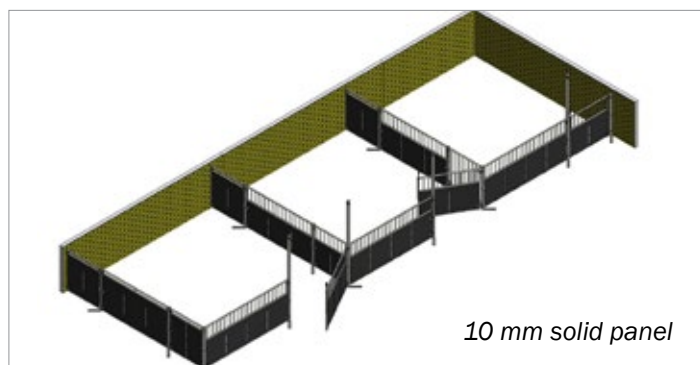
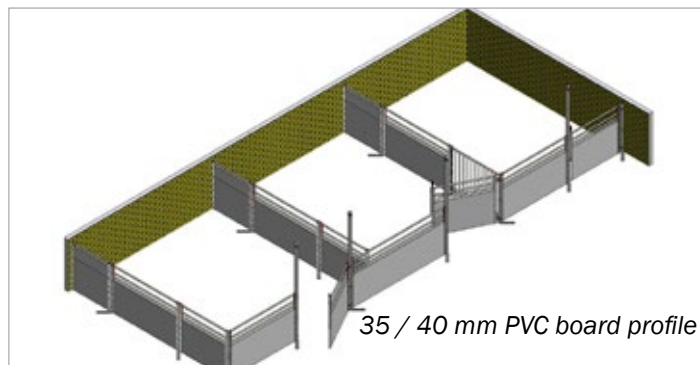
Height	110 cm
Posts	5 x 5 cm galvanized
U-profiles	1,5 mm SS steel
Bars	33,7 x 2,65 mm hot galvanized
Thickness:	
PVC board profile	35 / 40 mm
Fiber plate	10 mm
Steel plate	2 mm
Gate handle	
Twistlock	For 10, 35, 40 mm
Pinlock	For all types of INN-O-FLEX equipment

COLLECTION PEN FOR BOARS

- Can be used as separation between the pens to sows
- Good overview
- Quick exit
- Safe for the employees



▲ PARTITION IN THE TAPING DEPARTMENT



Subject to changes in materials and design is reserved.

B-6510-GB

ACO FUNKI A/S
 Kirkevænget 5
 DK-7400 Herning
 T. +45 9711 9600
 www.acofunki.com

