

Operating instructions

GB

FunkiNet Master

Copyright © by ACO Funki
Version 1 - 2006.09.21
Printed at ACO Funki

FunkiNet Master Manual

Index

Part I	Version	1
Part II	Master	1
1	Introduction	1
2	Feed consumption	2
3	Water consumption	3
4	Temperature	4
5	Dead pigs	5
6	pH	6
7	Setup	7
8	Alarm overview	8

1 Version

Manual for FunkiNet Version 1.0.138.276

2 Master


FunkiNet Master provides overviews of feed consumption, water consumption, temperature, dead pigs and pH.

The pig batch overviews contain reference curves calculated as the average of the last three batches.

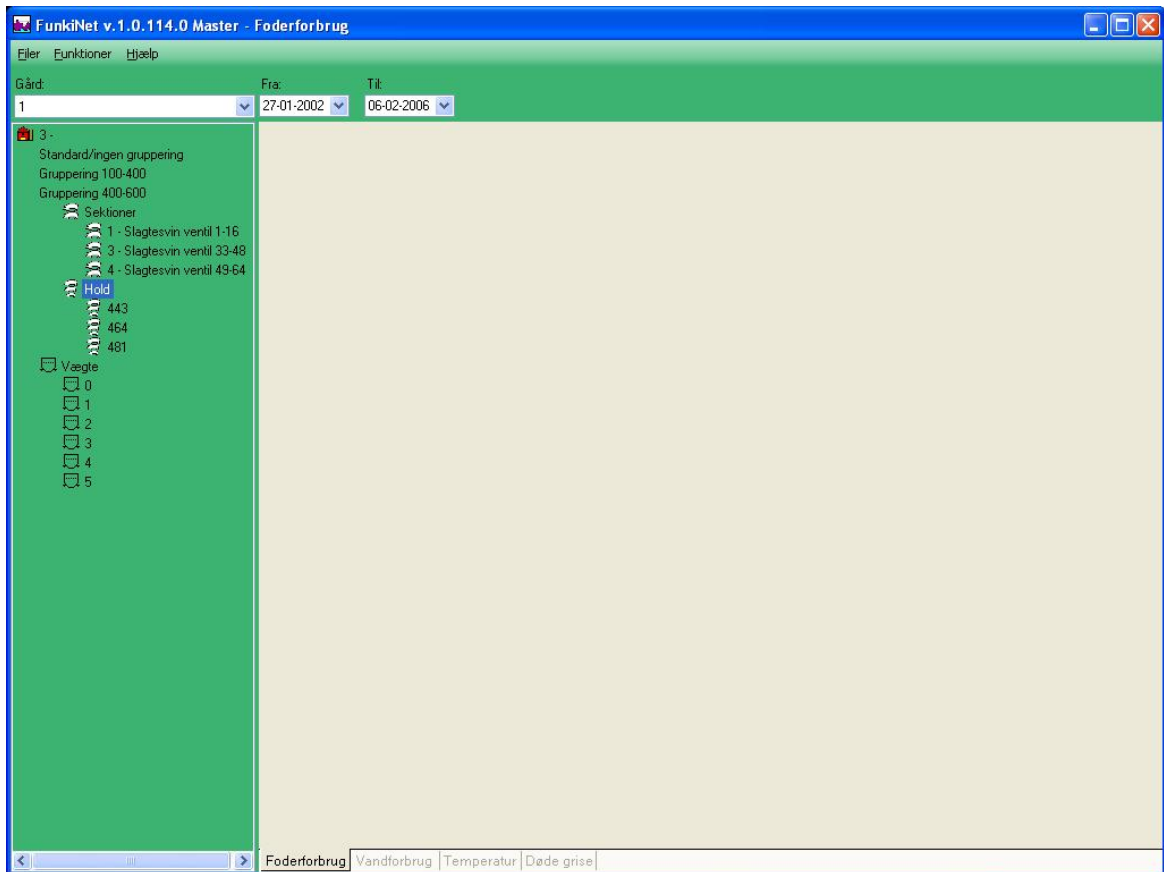
When collecting data, FunkiNet Master can activate alarms if unexpected fluctuations occur.

2.1 Introduction

The information to be displayed can be selected in the tree structure on the left-hand side of the main window. Once a farm has been selected, the controls associated with the farm are shown. Each control contains a series of pig batch number groups, which can be defined in the "Settings" option of the "Functions" menu. Each of these groups contains a series of sections, pig batches and scales. When one or more items in the various categories are selected by clicking them with the mouse, the associated data will be displayed in a table and graph on the right-hand side of the window. Start and stop dates can be selected at the top of the window.

To use the start and stop dates for a specific group, right-click the group using the mouse. If a section is right-clicked, data for the associated group are displayed. Depending on the level selected in the tree structure as "source", the various types of data to be displayed can be selected at the bottom of the window, i.e. feed consumption, water consumption, etc. If the data are accompanied by a  in the table, more detailed data can be displayed by clicking the symbol (if such data are available).

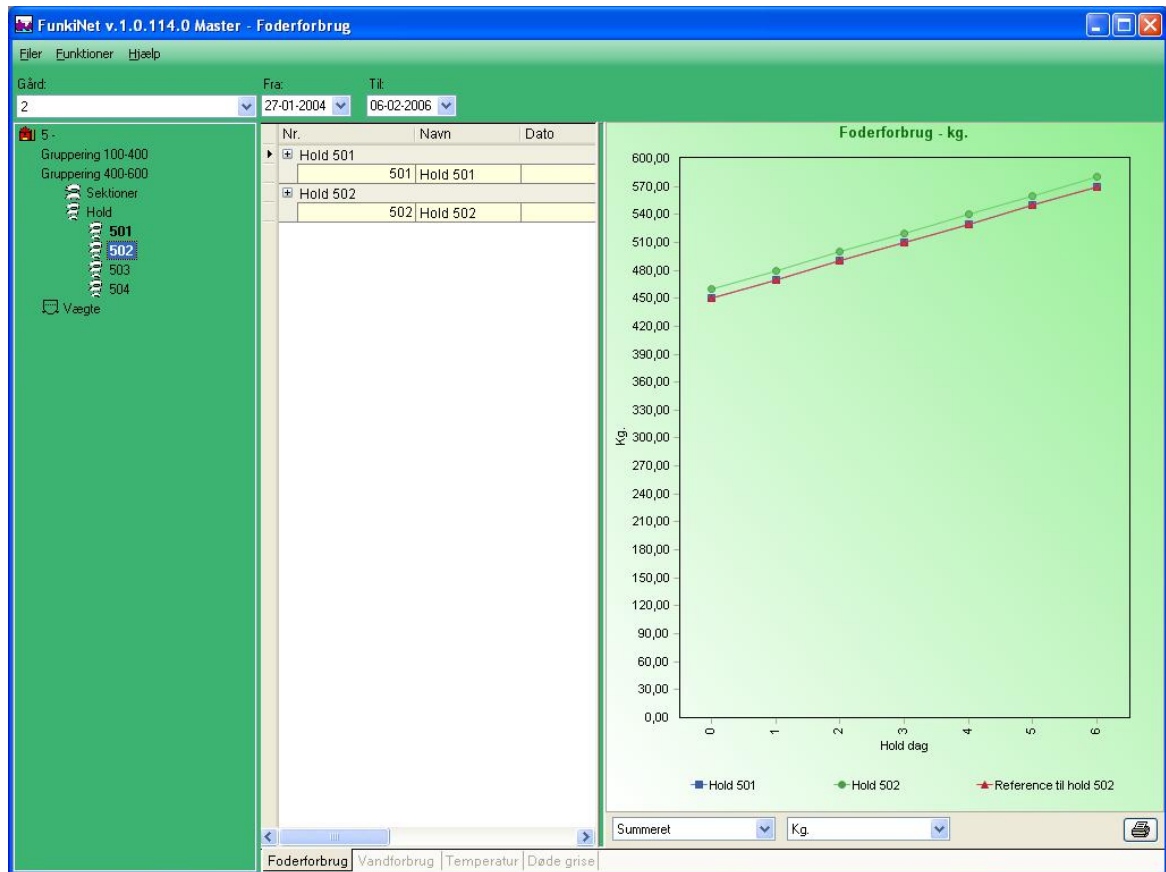
The menu at the top of the window allows the window to be closed and help and setup functions to be accessed.



2.2 Feed consumption

The feed consumption of one or more sections or pig batches is displayed in this window. Whether data are to be displayed as accumulated totals or as quantities per pig can be selected beneath the graph. It is also possible to select whether data are to be displayed as kg, MJ ME or MJ NE.

To print the table and graph, click the printer icon in the lower right-hand corner of the window.

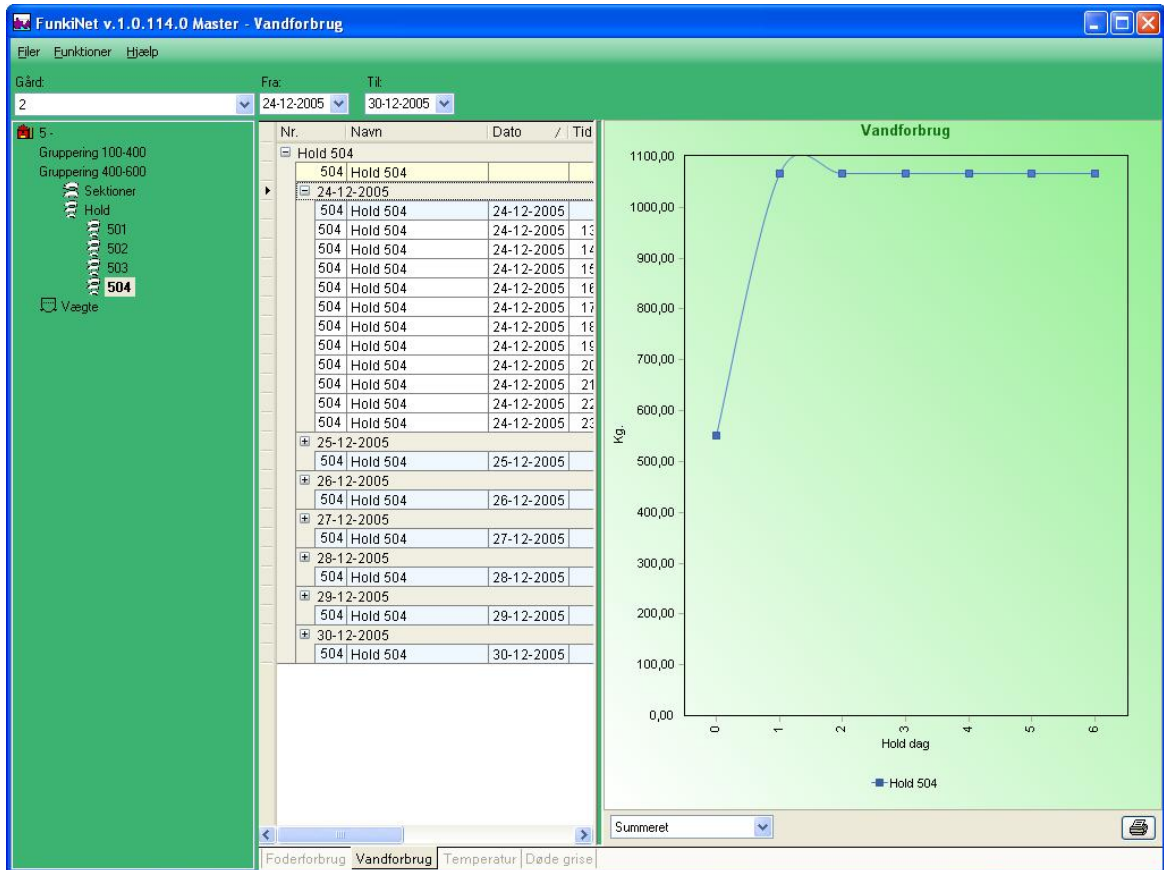


2.3 Water consumption

The water consumption of one or more sections or pig batches is displayed in this window. Whether data are to be displayed as accumulated totals or as quantities per pig can be selected beneath the graph.

If a point on the graph is clicked, data for the day in question are displayed per hour. To return to the graph showing consumption per day, click anywhere on the graph.

To print the table and graph, click the printer icon in the lower right-hand corner of the window.

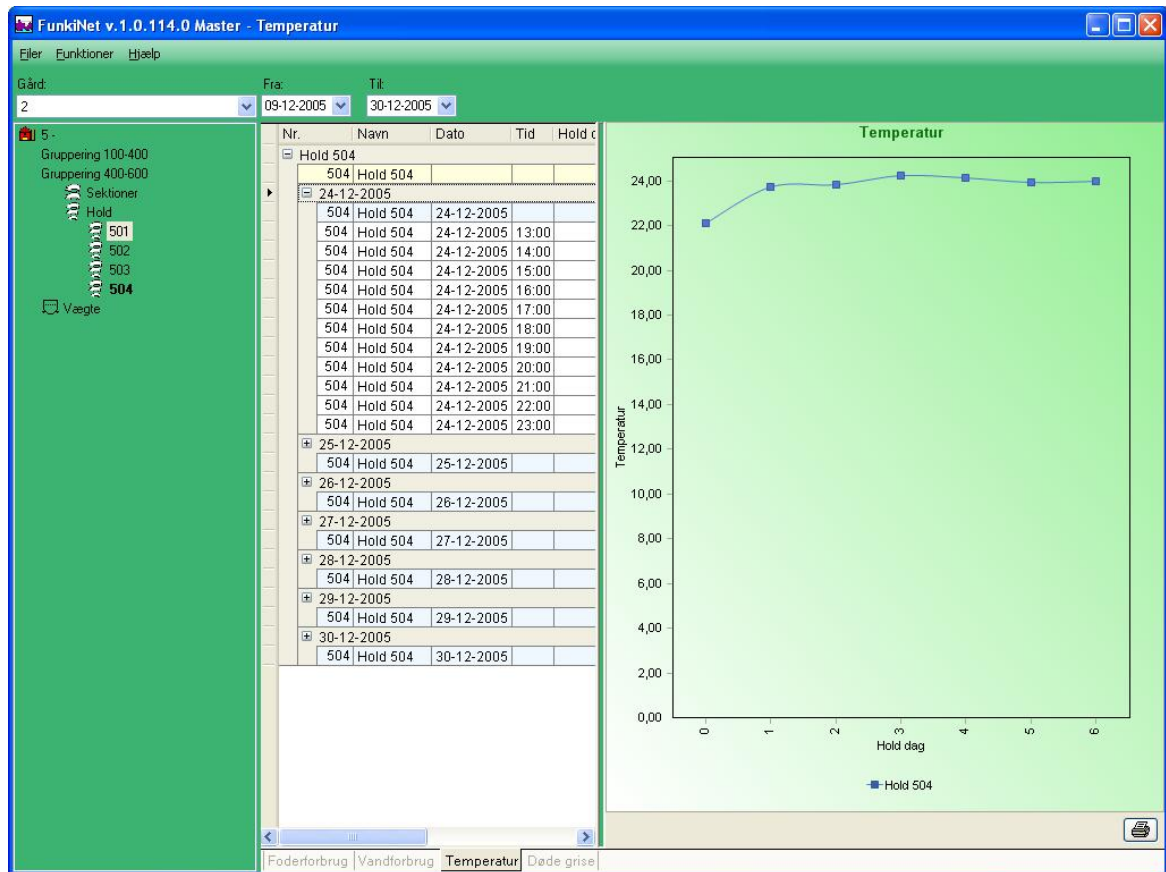


2.4 Temperature

The temperature in one or more sections or pig batches is displayed in this window.

If a point on the graph is clicked, data for the day in question are displayed per hour. To return to the graph showing consumption per day, click anywhere on the graph.

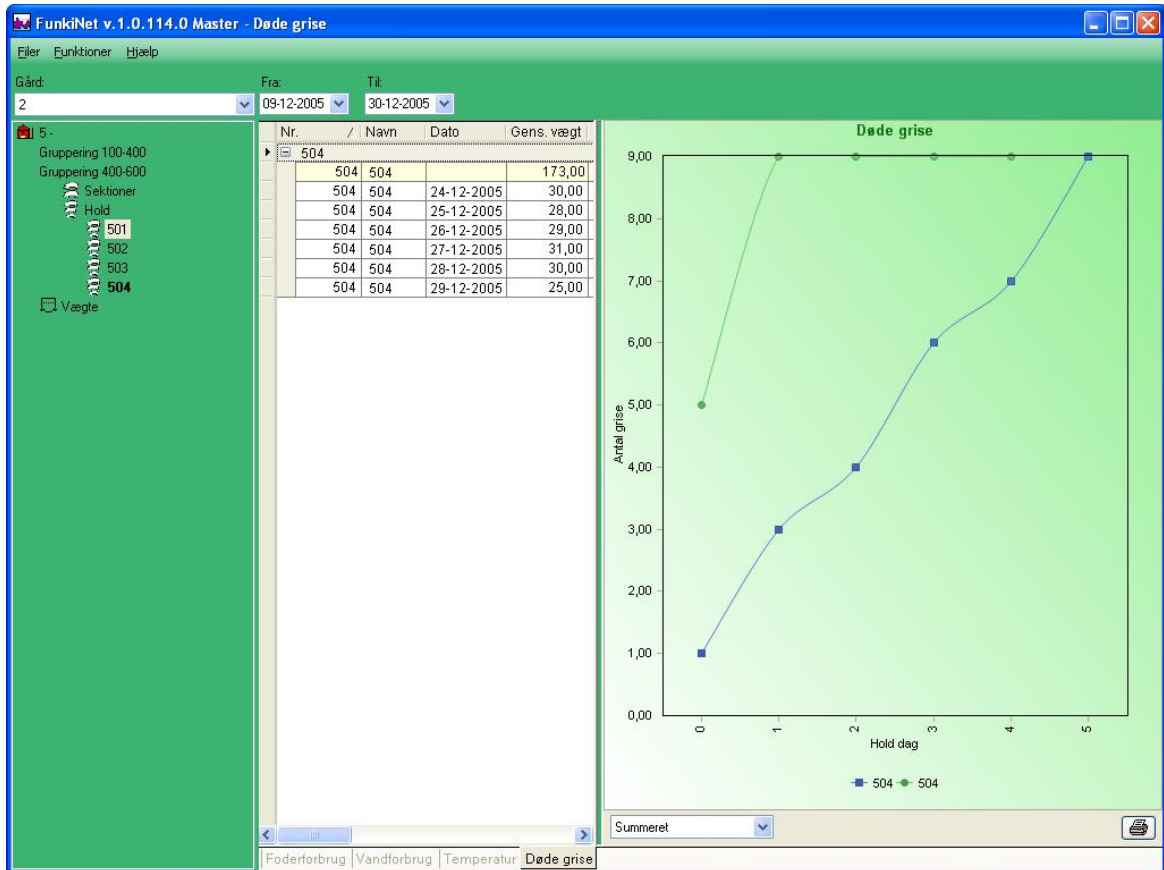
To print the table and graph, click the printer icon in the lower right-hand corner of the window.



2.5 Dead pigs

The number of dead pigs in one or more sections or groups is displayed in this window. Whether data are to be displayed as accumulated totals or percentages can be selected beneath the graph.

To print the table and graph, click the printer icon in the lower right-hand corner of the window.

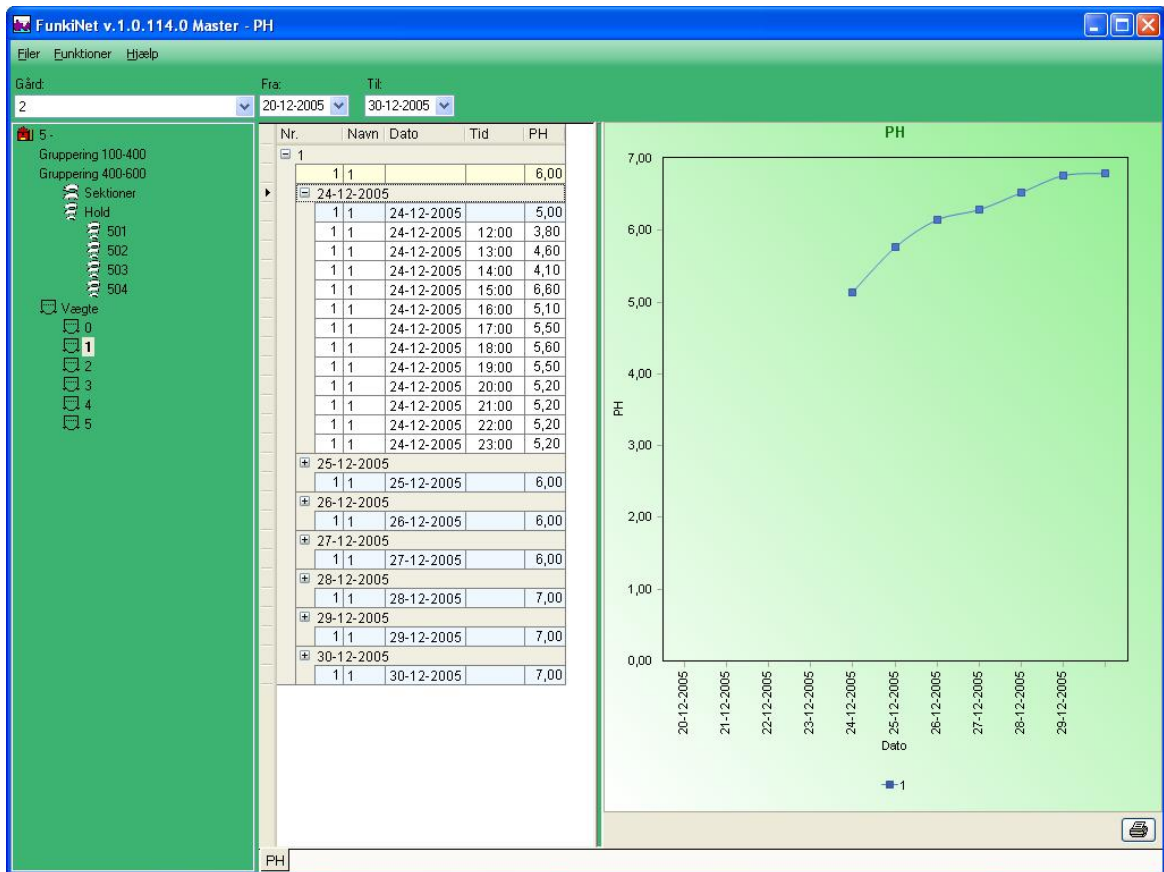


2.6 pH

The pH in one or more scales is displayed in this window.

If a point on the graph is clicked, data for the day in question are displayed per hour. To return to the graph showing data per day, click anywhere on the graph.

To print the table and graph, click the printer icon in the lower right-hand corner of the window.



2.7 Setup

The setup window allows the following to be set: the time at which the Master server is to collect data, alarm limits, and batch number groupings. As the Master collects data from the FunkiNet Controller, the data displayed will be most up-to-date if it is ensured that the Master does not collect data until after the Controller has collected data from the various process controls.

Alarm limits are used to activate an alarm if a given value deviates with a specified quantity. Alarms are displayed in the alarm overview. Alarms can also be sent as SMS messages if an SMS gateway has been configured on one of the process controls associated with the farm. The maximum number of SMS messages to be sent in connection with each data collection can also be set.

Click the Save button to save the values entered and close the window.

The screenshot shows a software window titled "Funkinet Master" with a blue border. At the top, there is a label "Daglig kørselstidspunkt" and a digital display showing "02:00". Below this is a section titled "Alarm indstillinger" containing a table with four columns: "Type", "Øvre grænse", "Nedre grænse", and "Max antal SMS'er". The table lists four alarm types: "Foderforbrug", "Vandforbrug", "Temperatur", and "Døde grise". Below the alarm settings is a section titled "Grupperinger" containing a table with three columns: "Navn", "Start hold nr.", and "Slut hold nr.". This table lists three groups: a group marked with an asterisk (*), "Gruppering 100-400", and "Gruppering 400-600". At the bottom of the window are two buttons: "Gem" and "Annullér".

Type	Øvre grænse	Nedre grænse	Max antal SMS'er
▶ Foderforbrug	10	10	5
Vandforbrug	10	10	5
Temperatur	1	0	5
Døde grise	1	0	0

Navn	Start hold nr.	Slut hold nr.
*		
▶ Gruppering 100-400	100	400
Gruppering 400-600	400	600

2.8 Alarm overview

This window provides an overview of the alarms that have been activated on the various process controls. The overview shows the unit on which the alarm was activated, the time the alarm was activated, etc.

FunkiNet v. 1.0.114.0 Master - PH

Ejer Funktioner Hjælp

Gård: Alamliste

Dato	Gård	PC id	Hold	Sektion(er)	Data type	Afregningsværdi
06-12-2005	1	3	464	4	Foderforbrug	-57,52
06-12-2005	1	3	464	4	Foderforbrug	-57,52
06-12-2005	1	3	443	3	Foderforbrug	-25,53
06-12-2005	1	3	443	3	Foderforbrug	-25,53
05-12-2005	1	3	464	4	Foderforbrug	-255,18
05-12-2005	1	3	464	4	Foderforbrug	-255,18
05-12-2005	1	3	443	3	Foderforbrug	-274,88
05-12-2005	1	3	443	3	Foderforbrug	-274,88
04-12-2005	1	3	464	4	Foderforbrug	70,06
04-12-2005	1	3	464	4	Foderforbrug	70,06