

Operating instructions

GB

FunkiNet Controller

Copyright © by ACO Funki
Version 1 - 2006.09.21
Printed at ACO Funki

FunkiNet Controller Manual

Index

Part I	Version	1
Part II	Controller	1
1	Introduction.....	1
2	Overview of consumption of all components - accumulated totals.....	2
3	Overview of nutrient consumption - accumulated totals.....	3
4	Overview of consumption of all mixes - accumulated totals.....	4
5	Overview of consumption of all mixes - over time.....	5
6	Overview of consumption of individual components - over time.....	6
7	Overview of component batch period.....	7
8	Overview of pig batch period.....	8
9	Display of individual records of dead pigs	9
10	Setup.....	10

1 **Version**

Manual for FunkiNet Version 1.0.138.276

2 **Controller**

FunkiNet Controller provides overviews of the consumption of components, nutrients and mixes.

Data concerning component batches (deliveries) and pig batches are also available.

Most variables are available as accumulated totals and consumption can also be displayed over time.

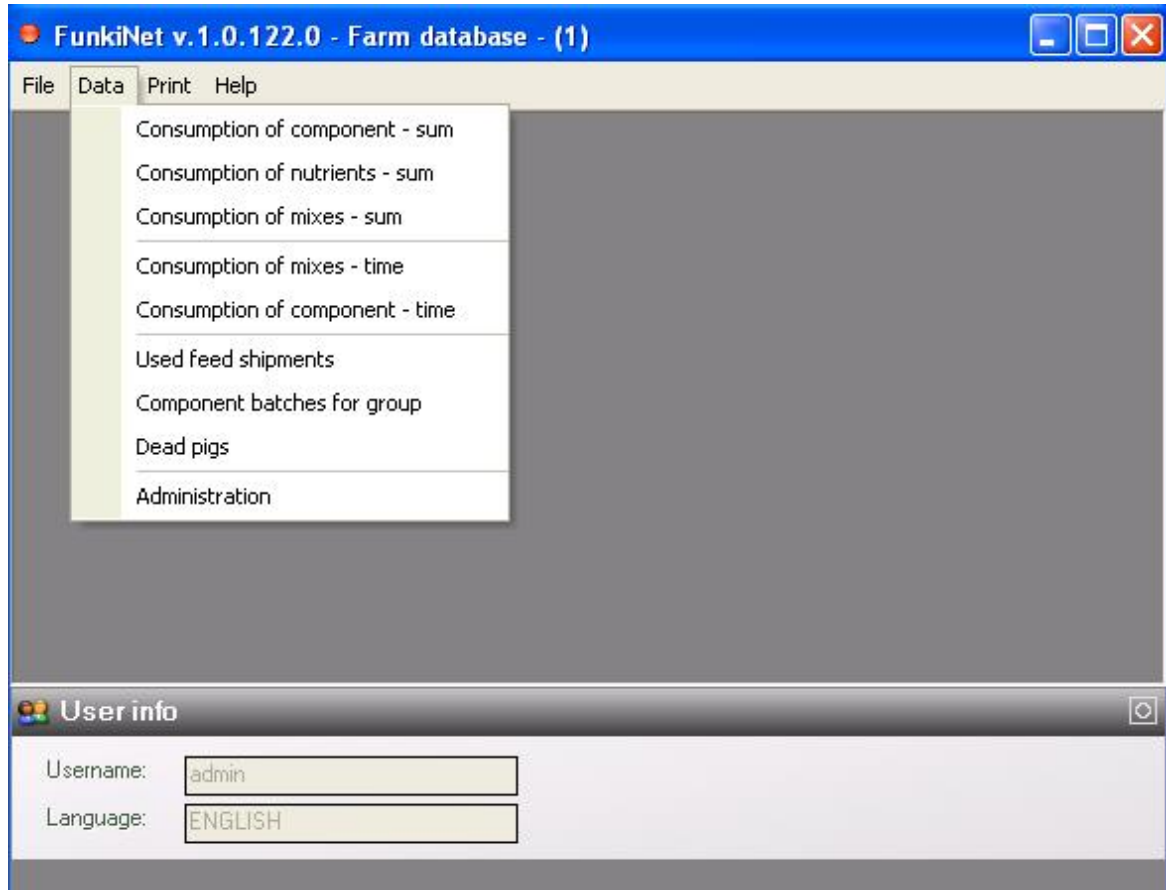
It is possible to set search criteria for all data extracts.

2.1 **Introduction**

The data to be displayed can be selected from the "Data" option in the main window menu.

The menu also contains a Controller setup option.

Search criteria are saved for each display until the main window is closed.



2.2

Overview of consumption of all components - accumulated totals

The purpose of this function is to display the distributed quantities of individual feed components, e.g. the quantities distributed to specific batches of pigs over a given period.

Procedure:

- Select Farm no.
- Select other limitations as required using From batch, To batch, From section, To section, From pen, To pen, or Sow ID.
- Select required period using From date and To date.
- If required, select Total per pig (the overall total is then divided by the average number of pigs fed during the specified period).
- Click Accept.

A value of 0 means no limitation.

Example: From batch = 100, To batch = 0, means that Batch no. is any number greater than 100.

The data to be displayed can be selected beneath the graph. This option is also used if printouts are required.

FunkiNet v.1.0.122.0 - Farm database - Consumption of components overview - sum

File Data Print Help

Choose criterion, and press execute. The following must be chosen: farm no, batch no, from date and to date

Farm no. [dropdown] From section [0] To section [0] From date [3. juni 2006] To date [23. juni 2006] Sow id [text box]

From group [0] To group [0] From pen [0] To pen [0]

Sum per pig

Execute Print

Y-axis [Kg]

Close Total kg [text box] Total MJ NE [text box] Total MJ NE [text box] Total price [text box]

User info

Username: [admin] Language: [ENGLISH]

2.3 Overview of nutrient consumption - accumulated totals

The purpose of this function is to display the distributed quantities of individual nutrients, e.g. the quantities distributed to specific batches of pigs over a given period.

Procedure:

- Select Farm no.
- Select other limitations as required using From batch, To batch, From section, To section, From pen, To pen, or Sow ID.
- Select required period using From date and To date.
- If required, select Total per pig (the overall total is then divided by the average number of pigs fed during the specified period).
- Click Accept.

A value of 0 means no limitation.

Example: From batch = 100, To batch = 0, means that Batch no. is any number greater than 100.

2.4

Overview of consumption of all mixes - accumulated totals

The purpose of this function is to display the distributed quantities of individual mixes, e.g. the quantities distributed to specific batches of pigs over a given period.

Procedure:

- Select Farm no.
- Select other limitations as required using From batch, To batch, From section, To section, From pen, To pen, or Sow ID.
- Select required period using From date and To date.
- If required, select Total per pig (the overall total is then divided by the average number of pigs fed during the specified period).
- Click Accept.

A value of 0 means no limitation.

Example: From batch = 100, To batch = 0, means that Batch no. is any number greater than 100.

The data to be displayed can be selected beneath the graph. This option is also used if printouts are required.

The screenshot shows a web application window titled "FunkiNet v.1.0.122.0 - Farm database - Consumption of mixes - sum". The interface includes a menu bar (File, Data, Print, Help) and a main content area with the following elements:

- A header instruction: "Choose criterion, and press execute. The following must be chosen: farm no, from date and to date".
- Form fields for selection criteria:
 - Farm no. (dropdown menu)
 - From section (spin box, value 0)
 - To section (spin box, value 0)
 - From date (calendar dropdown, value 3. juni 2006)
 - To date (calendar dropdown, value 23. juni 2006)
 - Sow id (text input field)
 - From group (spin box, value 0)
 - To group (spin box, value 0)
 - From pen (spin box, value 0)
 - To pen (spin box, value 0)
- A checkbox labeled "Sum per pig".
- "Execute" and "Print" buttons.
- A large empty area for a graph or table.
- A "Y-axis" dropdown menu set to "Kg".
- Summary fields at the bottom:
 - Total kg. (text input)
 - Total MJ NE / (text input)
 - Total MJ NE /kg (text input)
 - Total price (text input)
- A "User info" section with:
 - Username: admin (text input)
 - Language: ENGLISH (text input)

2.5 Overview of consumption of all mixes - over time

The purpose of this function is to display the distributed quantities of individual mixes, e.g. the quantities distributed to specific batches of pigs over a given period.

Procedure:

- Select Farm no.
- Select other limitations as required using From batch, To batch, From section, To section, From pen, To pen, or Sow ID.
- Select required period using From date and To date.
- Select required time unit: Day, Week or Month.
- If required, select Total per pig (the overall total for each period is then divided by the average number of pigs fed during that specific period).
- Click Accept.

A value of 0 means no limitation.

Example: From batch = 100, To batch = 0, means that Batch no. is any number greater than 100.

The data to be displayed can be selected beneath the graph. This option is also used if printouts are required.

FunkiNet v.1.0.122.0 - Farm database - Consumption of component - over time

File Data Print Help

Choose criterion, and press execute. The following must be chosen: farm no, component no, from date and to date

Farm no. [dropdown] From section [0] To section [0] From date [3 juni 2006] To date [23 juni 2006] Sow id [] Component []

From group [0] To group [0] From pen [0] To pen [0] Day Week Month

Sum per pig

Execute Print

Y-axis [Kg.]

Close Total Kg. [] Total FEsv [] Total FE dr [] Total price []

User info

Username: [admin] Language: [ENGLISH]

2.6

Overview of consumption of individual components - over time

The purpose of this function is to display the distributed quantities of individual components, e.g. the quantities distributed to specific batches of pigs over a given period.

Procedure:

- Select Farm no.
- Select other limitations as required using From batch, To batch, From section, To section, From pen, To pen, or Sow ID.
- Select required period using From date and To date.
- Select required time unit: Day, Week or Month.
- Select Component.
- If required, select Total per pig (the overall total for each period is then divided by the average number of pigs fed during that specific period).
- Click Accept.

A value of 0 means no limitation.

Example: From batch = 100, To batch = 0, means that Batch no. is any number greater than 100.

The data to be displayed can be selected beneath the graph. This option is also used if printouts are required.

FunkiNet v.1.0.122.0 - Farm database - Consumption of component - over time

File Data Print Help

Choose criterion, and press execute. The following must be chosen: farm no, component no, from date and to date

Farm no. [dropdown] From section 0 To section 0 From date 3. juni 2006 To date 23. juni 2006 Sow id [empty] Component [empty]

From group 0 To group 0 From pen 0 To pen 0

Sum per pig

Execute Print

Day Week Month

Y-axis Kg.

Close Total Kg. Total FEsv Total FE dr Total price

User info

Username: admin

Language: ENGLISH

2.7 Overview of component batch period

The purpose of this function is to trace which batches of pigs have received a specific component batch (supplier/raw material batch).

It is used in situations where a supplier reports that a delivery has contained the wrong constituents.

The function displays the period in which individual batches of pigs have been fed from the component batch concerned.

Procedure:

- Select Farm no.
- Select Component.
- Click Retrieve batch.
- Select Batch (supplier data are displayed once a batch has been selected).
- Select required period using From date and To date.
- Select other limitations as required using From batch or To batch.
- Select required time unit: Day, Week or Month.
- Click Accept.

A value of 0 means no limitation.

Example: From batch = 100, To batch = 0, means that Batch no. is any number greater than 100.

FunkiNet v.1.0.122.0 - Farm database - Overview of used component batches.

File Data Print Help

Choose criterion, and press execute. The following must be chosen: farm no, component no, batch no, from date and to date

Farm no. [dropdown] From date: 3. juni 2006 [dropdown] Component [text] Batch [text] Batch info [table]

From group: 0 [spin] To date: 23. juni 2006 [dropdown] [Get batch]

To group: 0 [spin] Day Week Month [radio]

[Execute] [Print]

Close Avg. weight [text] Avg. pig count [text] Feeding days [text]

User info

Username: admin [text] Language: ENGLISH [text]

2.8 Overview of pig batch period

The purpose of this function is to trace which component batch (supplier/raw material batch) has been fed to a specified batch of pigs.

It is for example used in situations where the growth rates of certain pigs suggest that a component batch has contained the wrong constituents.

The function displays the period in which the batch of pigs has been fed from the component batch concerned.

Procedure:

- Select Farm no.
- Select From batch and To batch.
- Select required period using From date and To date.
- Select required time unit: Day, Week or Month.
- Click Accept.

A value of 0 means no limitation.

Example: From batch = 100, To batch = 0, means that Batch no. is any number greater than 100.

FunkiNet v.1.0.122.0 - Farm database - Overview of component batches for group

File Data Print Help

Choose criterion, and press execute. The following must be chosen: farm no, from date and to date

Farm no. [dropdown] From date 3. juni 2006 [dropdown] Component [text box]

From group 0 [spin] To date 23. juni 2006 [dropdown]

To group 0 [spin] Day Week Month

Execute Print

Close Avg. weight [text box] Avg. pig count [text box] Feeding days [text box]

User info

Username: admin [text box]

Language: ENGLISH [text box]

2.9 Display of individual records of dead pigs

The purpose of this function is to display individual records of dead pigs, e.g. in a specific batch over a specified period.

All records of dead pigs are displayed individually rather than as daily totals.

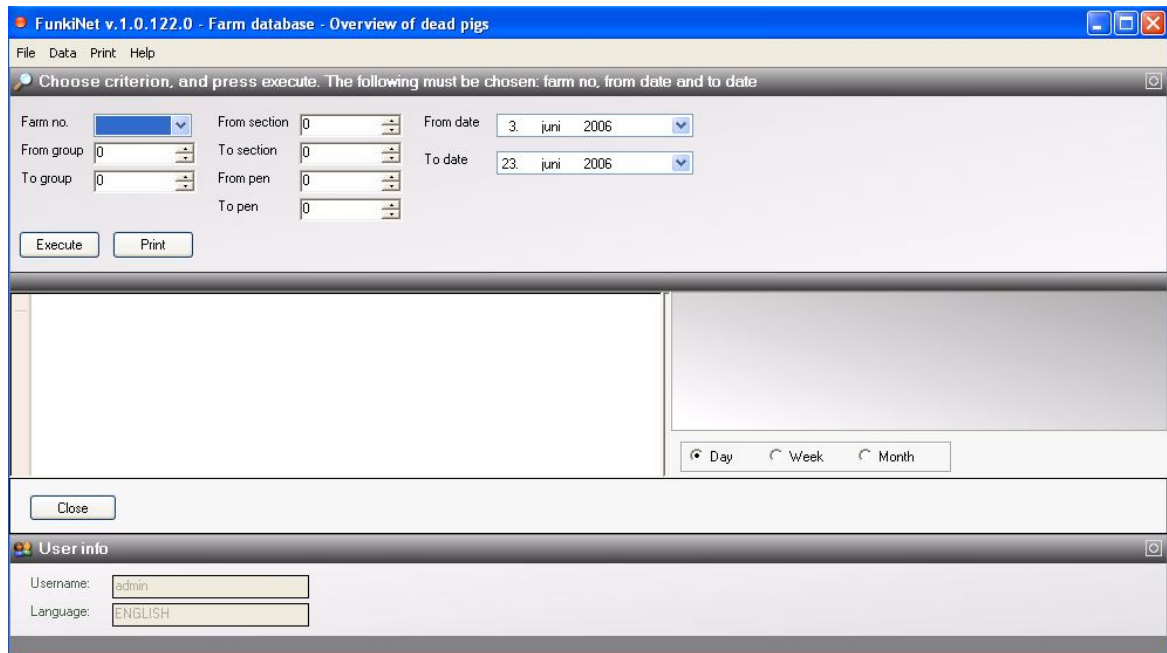
Procedure:

- Select Farm no.
- Select other limitations as required using From batch, To batch, From section, To section, From pen or To pen.
- Select required period using From date and To date.
- Select required time unit: Day, Week or Month.
- Click Accept.

A value of 0 means no limitation.

Example: From batch = 100, To batch = 0, means that Batch no. is any number greater than 100.

The graph shows the total number of dead pigs for each individual period.



2.10 Setup

The farm no. for which Controller is to retrieve data can be set here. The time at which Controller is to retrieve data from the individual process controls can also be set. A time at which the process controls are relatively inactive should be selected. An overview of the data retrievals performed is also displayed.

