

Operating instructions

GB

FunkiNet Pocket Offline

Copyright © by ACO Funki
Version 1 - 2006.09.21
Printed at ACO Funki

FunkiNet Pocket Manual



Contents

INTRODUCTION	5
PDA REQUIREMENTS	5
WIRELESS SOLUTION	5
DOCKING STATION SOLUTION	5
<i>Requirements during operation</i>	5
<i>User data</i>	5
<i>Pen data</i>	5
<i>Midnight calculation</i>	6
MAIN DISPLAY (FUNKINET POCKET)	7
LOG IN	7
LOG OUT	7
MENU	7
<i>Close</i>	7
<i>About FunkiNet Pocket</i>	7
<i>Settings</i>	7
DISPLAY PEN DATA.....	7
ABOUT FUNKINET POCKET	8
IP ADDRESS	8
CURRENT IP ADDRESS	9
NEW IP ADDRESS.....	9
SELECT LANGUAGE	10
LOG-IN LANGUAGE	10
SELECT LANGUAGE.....	10
PASSWORD	10
ENABLE/DISABLE "CHECK PASSWORD"	10
PEN DATA	11
PEN DATA TABLE	11
MENU	11
<i>Close</i>	12
<i>Transmit pen data</i>	12
<i>Cancel changes</i>	12
<i>Select section</i>	12
<i>Edit profiles</i>	12
SELECT PROFILE.....	12
CONTEXT MENU.....	12
<i>Move pigs</i>	12
<i>Dead pigs</i>	12
<i>Move sow</i>	13
<i>Add sow</i>	13
<i>Delete sow</i>	13
<i>Find sow</i>	13
TRANSMIT PEN DATA	13

CANCEL CHANGES	13
CANCEL CHANGES FOR A SINGLE PEN	13
CANCEL CHANGES FOR A SINGLE SOW	14
CANCEL ALL CHANGES	14
CLOSE.....	14
CONFIRM (CHANGE CANCELLATION)	14
SELECT SECTION	14
SELECT SECTION	15
CLOSE.....	15
EDIT PROFILES	16
CURRENT PROFILE	16
PROFILE NAME.....	16
DATA FIELDS	16
CLOSE AND SAVE.....	17
MOVE PIGS	18
MOVE PIGS FROM PEN	18
PIGS TO BE MOVED.....	18
MOVE PIGS TO PEN.....	18
MOVE PIGS.....	18
DEAD PIGS	18
MOVE SOW	19
ADD SOW	19
DELETE SOW	20
FIND SOW	20
APPENDIX	21
CREATING A PARTNERSHIP BETWEEN PC AND PDA	21
FIGURE 1 – MAIN DISPLAY.....	24
FIGURE 2 – ABOUT FUNKINET POCKET.....	24
FIGURE 3 – IP ADDRESS	24
FIGURE 4 – SELECT LANGUAGE	24
FIGURE 5 – PASSWORD	25
FIGURE 6 – PEN DATA (MENU)	25
FIGURE 7 – PEN DATA (SELECT PROFILE).....	25
FIGURE 8 – PEN DATA (CONTEXT MENU).....	25
FIGURE 9 – TRANSMIT PEN DATA	26
FIGURE 10 – CANCEL CHANGES.....	26
FIGURE 11 – CONFIRM	26
FIGURE 12 – SELECT SECTION.....	26
FIGURE 13 – PROFILES	27
FIGURE 14 – MOVE PIGS	27
FIGURE 15 – DEAD PIGS.....	27

FIGURE 16 – MOVE SOW.....	27
FIGURE 17 – ADD SOW.....	28
FIGURE 18 – DELETE SOW.....	28
FIGURE 19 – FIND SOW.....	28

Introduction

With the exception of this general introduction, this manual is divided into sections describing the individual displays in FunkiNet Pocket and their function.

An appendix at the back of the manual describes how to create a partnership between a PC and a PDA using Microsoft ActiveSync. In addition, the appendix contains illustrations of all FunkiNet Pocket displays.

PDA requirements

For optimum performance of the FunkiNet Pocket program, the PDA used must meet the following requirements:

- The PDA ***must*** have a memory card of at least 16 MB. Otherwise, it will not be possible to install the program.
- Compact Framework ***must*** be installed on the PDA. Otherwise, it will not be possible to install the program.

Wireless solution

Implementation pending

Docking station solution

Requirements during operation

The following conditions must be met before the PDA can exchange data with the FunkiNet Servers:

- A PDA docking station must be connected to a PC on the farm network.
- An ImportExport Server must be operating on the PC concerned.
- Microsoft ActiveSync must be running on the PC concerned and contact must be established between the program and the PDA.
- The PDA must be in place in the docking station.
- The PDA must transmit to the IP address at which the ImportExport Server is located.

User data

After successfully logging into the PDA for the first time, it is possible to log in again while the PDA is not in the docking station as user data are stored in the PDA.

If, however, user data are altered on the FunkiNet Server, it will no longer be possible to log into the PDA using the old user data if the PDA is in the docking station.

Pen data

When a user logs in while the PDA is in the docking station, data for all active pens will be sent to the PDA from the farm's active FunkiNet Server and stored on the PDA.

When a user logs in while the PDA is not in the docking station, the PDA will use the pen data that it received the last time a user logged in while the PDA was in the docking station.

If data for one or more pens have previously been changed on the PDA but the changes have not been transferred to the FunkiNet Server, such data will overwrite data received from the FunkiNet Servers. This ensures that data are not lost if the program is shut down or a new user logs in.

The PDA has two additional fields for pen data in relation to the FunkiNet Servers: "Node ID", which specifies the FunkiNet Server associated with the pen, and "Time", which indicates when the pen data were last changed on the PDA. If the "Time" field is blank, pen data have not been changed on the PDA since its data were transferred from a FunkiNet Server.

Midnight calculation

Pen data are updated during midnight calculations on a FunkiNet Server. This means that pen data will be incorrect if altered pen data are not sent from the PDA to the FunkiNet Servers before midnight calculations are performed.

Example of incorrect data:

Pen data retrieved in the morning – "Weight" = 20 for Pen 1. Pen 1 is then renamed on the PDA. When the FunkiNet Server performs its midnight calculations, Pen 1 "Weight" is changed to 21. The following day, pen data are sent from the PDA to the FunkiNet Server. Pen 1 "Weight" on the FunkiNet Server is thus overwritten with 20 when it should have been 21. The FunkiNet Server therefore contains incorrect data.

It is therefore advisable to retrieve pen data in the morning (by logging in while the PDA is in the docking station), make changes during the day, and then transfer the data to the FunkiNet Servers again *before* midnight (i.e. before midnight calculations are made).

In situations where pen data are not transferred from the PDA before midnight calculations are performed, two options exist:

1. Delete all changes in PDA data: Display pen data → Menu → Cancel changes → Cancel all changes. *Recommended.*
2. Transfer all changes from the PDA and then change any incorrect data using FunkiNet UserInterface. *Not recommended.*

Main display (Funkinet Pocket)

(See Appendix, figure 1)

The "Funkinet Pocket" display is the first to be shown when the program is started.

Log in

Once a user has entered a username and password, and pressed the "Log in" button, user data are retrieved from the ImportExport Server. The username and password are checked and, if accepted, all pen data are retrieved from the ImportExport Server.

The user's PDA profile is then retrieved. If the user profile stipulates a different language than that currently set up on the PDA, the language is retrieved from a Funkinet server and installed.

Once the "Log in" procedure has been successfully completed, the username will be displayed above the "Log in" button in green. Otherwise the username will be displayed in red.

If a wireless PDA solution is used, pen data will be transmitted whenever they are updated on the Funkinet Servers. Otherwise, it is necessary to log out and then log in again while the PDA is in a docking station to receive the latest pen updates from the Funkinet Servers.

When logged in, users have access to all options on the main display.

Log out

When not logged in, users have access to the following "Menu" options:

- The menu option "Close".
- The menu option "About Funkinet Pocket".
- The menu option "Connection" on the "Settings" menu.

Menu

"Menu" contains the options "Close", "About Funkinet Pocket" and "Settings".

Close

Select "Close" to exit the program. Any changes made to pens, profiles or any other settings will be saved before exiting.

About Funkinet Pocket

The "About Funkinet Pocket" display appears when this option is selected.

Settings

The "Settings" menu contains the options "Connection", "Language" and "Password". Each of these options opens a new display concerned with PDA setup.

Display pen data

To display pen data, users must first log in and then select the "Display pen data" option.

About FunkiNet Pocket

(See Appendix, figure 2)

This display is shown when the "About FunkiNet Pocket" option is selected on the main display.

The "About FunkiNet Pocket" display provides information on version number and copyrights.

Select "Close" to exit the display and return to the main display.

IP address

(See Appendix, figure 3)

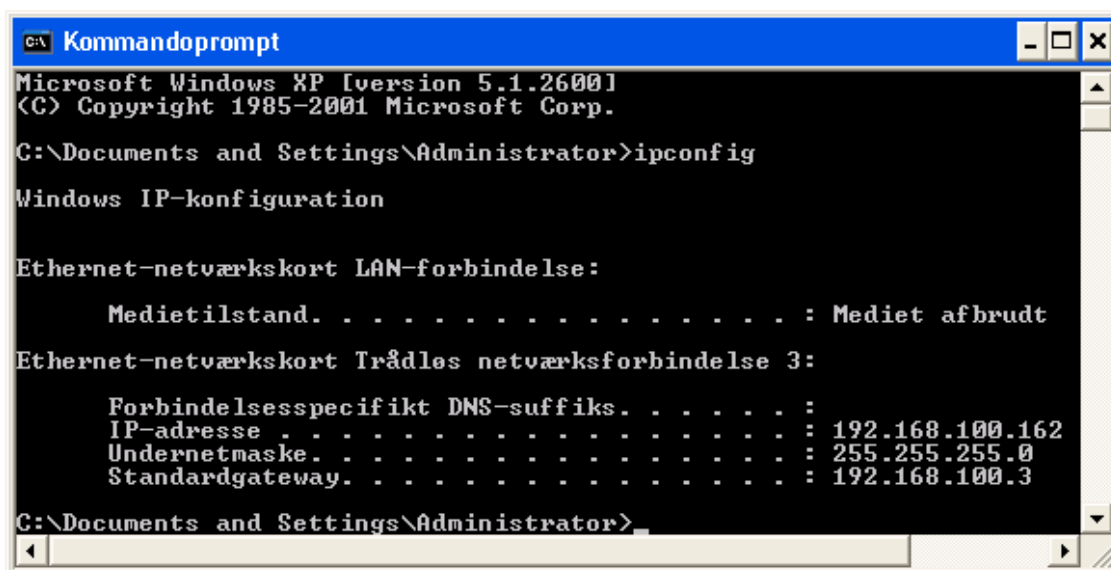
This display is shown when the "Connection" option is selected on the main display.

For the PDA to transfer data to and from an ImportExport Server, the PDA must know the IP address of the PC to which the docking station is connected.

Select "Close" to exit the display and return to the main display. Any changes made to the IP address will be saved before exiting.

If the IP address is unknown, the following procedure can be used to identify it:

1. Switch on the PC to which the docking station is connected.
2. In Windows, select Start → Programs → Accessories → Command prompt.
3. In the "Command prompt" window, enter "ipconfig" and then press "Enter".
4. The IP address will be displayed in the "IP address" line. In the example illustrated below, the IP address is "192.168.100.162".



```
Microsoft Windows XP [version 5.1.2600]
(C) Copyright 1985-2001 Microsoft Corp.

G:\Documents and Settings\Administrator>ipconfig

Windows IP-konfiguration

Ethernet-netværkskort LAN-forbindelse:

    Medietilstand. . . . . : Mediet afbrudt

Ethernet-netværkskort Trådløs netværksforbindelse 3:

    Forbindelsesspecifikt DNS-suffiks. . . . . :
    IP-adresse . . . . . : 192.168.100.162
    Undernetmaske. . . . . : 255.255.255.0
    Standardgateway. . . . . : 192.168.100.3

G:\Documents and Settings\Administrator>
```

Current IP address

The IP address currently used by the PDA to communicate with the ImportExport Server is shown at the top of the display. If this IP address is not identical to the IP address of the PC on which the ImportExport Server with which data are to be exchanged is installed, it will not be possible to exchange data with the ImportExport Server.

New IP address

To program the PDA to use a different IP address, a new IP address must be entered in the four data fields.

When the "OK" button is pressed, the PDA will attempt to contact the ImportExport Server to check the connection. If contact cannot be made, the IP address will revert to its original value. If contact is successfully achieved, the newly entered IP address will be retained.

Select language

(See Appendix, figure 4)

This display is shown when the "Language" option is selected on the main display. On activating the display, the available languages are retrieved from the FunkiNet Server.

The display allows the language used by the PDA to be selected. All display texts will be shown in the language selected (if the language is available on the FunkiNet Server). When not in contact with the ImportExport Server, the language can only be changed for the main display.

Select "Close" to exit the display and return to the main display.

Log-in language

To change the language of the main display, press the drop-down arrow of the "Log-in language" field. The languages available on the PDA will then be displayed, allowing the required language for the main display to be selected.

If a new language is selected, language data will be retrieved from a file in the PDA and the main display will change language.

Select language

To change the language used elsewhere by the PDA, the required language must be selected from the "Select language" drop-down list. The drop-down list shows which languages are available on the FunkiNet Server and allows the required language to be selected.

If a new language is selected, language data will be retrieved from the FunkiNet Server and the program will change language.

Password

(See Appendix, figure 5)

This display is shown when the "Password" option is selected on the main display.

Whether the password used to log in is to be checked or not can be stipulated here. If the "Check password" option is disabled, users are able to log in using their username alone.

Select "Close" to exit the display and return to the main display.

Enable/disable "Check password"

"Check password" can be enabled or disabled using the checkbox. Any user can enable "Check password", but only supervisors can disable the function.

If "Check password" is enabled, the checkbox is ticked. Otherwise it is not.

Pen data

(See Appendix, figures 6, 7 and 8)

This display is shown when the "Display pen data" option is selected on the main display.

User profile data are retrieved when the display is activated. The display is therefore shown in the same way as when the user was last logged in, i.e. the section last displayed will be shown, table alignment will be as last used and the last used profile will be active.

The profile determines which fields the user has selected to be displayed in the table.

Pen data table

Pen data are displayed at section level. The table therefore displays data for the section last selected by the user. If a user has not previously logged in, data for the section with the lowest number will be displayed.

Table alignment can be changed, allowing columns and rows to be interchanged. To change table alignment, press the field in the uppermost left-hand corner.

Pen data can be changed direct in the table. To change data, select the required field and change the data contained in the field. Not all pen data can be changed in this way, however, as some pen data cannot be changed by users. The fields which can or cannot be changed are specified in the table below.

Fields which can be changed	Fields which cannot be changed
Pen name	ID
Age	Mix
Weight	Distribution (kg)
Number of sows	% of max. daily quantity
Number of pigs	Pen days
Deviation, +/-	Summation
Deviation, days	Section ID
Deviation, %	Node ID
Fixed quantity	Time
Valve status	Multiphase mix
Curve ID	
Group ID	

NOTE!

As seen in the above, "Number of pigs" and "Number of sows" can be changed direct in the table. However, pen log objects will ***not*** be generated if these fields are changed direct in the table.

Menu

(See Appendix, figure 6)

"Menu" contains the options "Close", "Transmit pen data", "Cancel changes", "Select section" and "Edit profiles".

Close

If "Close" is selected, user profile data and any changes to pen and sow data are saved before returning to the main display.

Transmit pen data

If pen data have been changed, selecting this option will open the "Transmit pen data" display. If no pen data have been changed, the option will be disabled.

Cancel changes

If pen data have been changed, selecting this option will open the "Cancel changes" display. If no pen data have been changed, the option will be disabled.

Select section

This option allows users to select the section for which pen data are displayed. Selecting the option opens the "Select section" display.

Edit profiles

This option allows user profiles to be edited. Selecting the option opens the "Profiles" display.

Select profile

(See Appendix, figure 7)

"Select profile" allows any of five alternative profiles to be selected. If a new profile is selected, the pen data table will be displayed in the format defined by the profile.

The current profile is indicated by a tick alongside its name.

Context menu

(See Appendix, figure 8)

On right-clicking the display (i.e. holding the pen against the display), a context menu appears with the options "Move pigs", "Dead pigs", "Move sow", "Add sow", "Delete sow" and "Find sow".

The pen from which pigs are moved is the pen last highlighted in the table before right-clicking the display.

Example: Pigs are to be moved from pen number 5.

Highlight pen 5 by left-clicking pen 5 (i.e. briefly touching the display). Then right-click anywhere within the table (by holding the pen against the display) to activate the context menu. Select "Move pigs" in the menu. The "Move pigs" display will then appear with pen 5 specified as the pen from which pigs are to be moved.

Move pigs

This option should be selected to move pigs from one pen to another. Selecting the option opens the "Move pigs" display.

Dead pigs

This option should be selected to record the number of dead pigs in a pen. Selecting the option opens the "Dead pigs" display.

Move sow

This option should be selected to move sows from one pen to another. Selecting the option opens the "Move sow" display.

Add sow

This option should be selected to add a sow to a pen. Selecting the option opens the "Add sow" display.

Delete sow

This option should be selected to delete a sow from a pen. Selecting the option opens the "Delete sow" display.

Find sow

This option should be selected to locate the pen in which a specific sow is housed or to view which sows are currently housed in a specific pen. Selecting the option opens the "Find sow" display.

Transmit pen data

(See Appendix, figure 9)

This display is shown when the "Transmit pen data" option is selected on the "Pen data" display.

If the "Yes" button is pressed, all changes to pen and sow data and all pen log objects will be transmitted to the ImportExport Server. The program will then return to the "Pen data" display. If the "No" button is pressed, the program will return to the "Pen data" display without transmitting any data.

Cancel changes

(See Appendix, figure 10)

This display is shown when the "Cancel changes" option is selected in the "Pen data" display.

The "Cancel changes" display contains three options: "Cancel changes for a single pen", "Cancel changes for a single sow" and "Cancel all changes".

Cancel changes for a single pen

This option allows changes for a single pen to be cancelled. A pen ID must be entered in the field to the left of the "OK" button.

Pen log objects for the specified pen will then be deleted. If such pen log objects were created because pigs or sows were moved to or from the pen, these pigs/sows will be subtracted from/added to the pens concerned.

On pressing "OK", an "Accept" display appears in which the user must provide final acceptance of the cancellation.

Cancel changes for a single sow

This option allows changes for a single sow to be cancelled. A sow ID must be entered in the field to the left of the "OK" button.

All pen log objects for the specified sow will then be deleted. If such pen log objects were created because the sow was moved to or from the pen, the sow will be subtracted from/added to the pens concerned.

On pressing "OK", an "Accept" display appears in which the user must provide final acceptance of the cancellation.

Cancel all changes

If the "OK" button for "Cancel all changes" is selected, all pen log objects will be deleted and all the pens changed on the PDA will revert to the data last received from the FunkiNet Servers.

On pressing "OK", an "Accept" display appears in which the user must provide final acceptance of the cancellation.

Close

When "Close" is selected, the program returns to the "Pen data" display.

Confirm (change cancellation)

(See Appendix, figure 11)

This display is shown when one of the "OK" buttons on the "Cancel changes" display is selected.

It warns the user of the consequences if the cancellation is confirmed. If the user has selected "Cancel all changes" the number of pens or pen log objects affected by the cancellation will be displayed in brackets.

If the "Yes" button is pressed, the pens/sows concerned will revert to the values they had before changes were made. The pen log objects concerned will be deleted. The program will then return to the "Pen data" display.

If the "No" button is pressed, changes to the pens/pen log objects concerned will not be cancelled and the program will return to the "Cancel changes" display.

Select section

(See Appendix, figure 12)

This display is shown when the "Select section" option is selected on the "Pen data" display.

It allows users to select the section for which pen data are to be shown in the table on the "Pen data" display.

Select section

To change section, press the arrow on the drop-down list. The sections containing active pens will then be listed, allowing the required section to be selected. After a section has been selected, the program returns to the "Pen data" display where data for the newly selected section will be shown.

Close

When "Close" is selected, the program returns to the "Pen data" display.

Edit profiles

(See Appendix, figure 13)

This display is shown when the "Edit profiles" option is selected on the "Pen data" display.

It allows users to specify the way in which pen data are to be presented in the table on the "Pen data" display.

Each user can choose between five user-specific profiles. When a user logs into a specific PDA for the first time, all five profiles will be set up to display all pen data.

Current profile

The drop-down list indicates the profile for which any changes will apply. To change another profile, the required profile must be selected by pressing the arrow on the drop-down list and selecting one of the five available profiles. The available profiles are listed in the drop-down list by name.

Profile name

This field allows the profile to be renamed. Press the text field to the right of "Profile name" and enter the required name. The new name will then also be displayed in the "Select profile" menu on the "Pen data" display.

Data fields

Data fields are divided into two areas. The upper area contains the data fields that are available for a pen but which are not displayed in the current profile. The lower area contains the data fields displayed in the current profile.

Data fields can be highlighted by pressing them.

Data fields are named in the "Edit profiles" display by their full explanatory names. For some data fields with long names, an abbreviated name is used in the pen data table on the "Pen data" display.

The large "+" and "-" buttons are used to move a data field from one area to another. The "+" button is used to move a highlighted data field from the upper area to the lower area. The "-" button is used to move a highlighted data field from the lower area to the upper area.

The "++" button is used to move all data fields from the upper area to the lower area. The "--" button is used to move all data fields from the lower area to the upper area.

The order in which data fields appear in the lower area determines the order in which they are shown in the pen data table on the "Pen data" display.

The small "+" and "-" buttons are used to change the order in which data fields appear in the lower area. The "+" button is used to move a highlighted data field upwards while the "-" button is used to move a highlighted data field downwards.

If the areas contain more data fields than can be displayed in the area, a scroll bar will become available to the right of the area. The scroll bar can be used to scroll upwards or downwards in order to locate a required data field.

The table below lists data field names and their abbreviations:

Data field name	Abbreviated data field name
ID	ID
Node ID	NodeID
Pen name	Name
Days	Days
Weight	Weight
Number of sows	Sows
Number of pigs	Pigs
Mix	Mix
Deviation, +/-	Dev+/-
Deviation, days	Devday
Deviation, %	Dev%
Distribution (kg)	Distkg
% of max. daily quantity	%maxq
Pen days	PenDays
Summation	Sum
Fixed quantity	FixQ
Time of change	LastChange
Valve status	ValvStat
Section ID	SectID
Curve ID	CurvID
Group ID	GrpID
Multiphase mix	MulMix

Close and save

When "Close and save" is selected, the changes made are saved and the program returns to the "Pen data" display. To activate the changes, the new profile must be selected in the "Pen data" display.

Move pigs

(See Appendix, figure 14)

This display is shown when the "Move pigs" option is selected on the context menu of the "Pen data" display.

It allows pigs to be moved from one pen to another. The display has three headings: "Move pigs from pen", "Pigs to be moved" and "Move pigs to pen".

Move pigs from pen

The pen from which pigs are to be moved is shown here. The number of pigs presently in the pen and their average weight are also shown.

Pigs to be moved

The number of pigs to be moved should be entered in the "Number of pigs" text field.

The average weight of the pigs moved should be entered in the "Average weight (kg)" text field. The text field currently displays the average weight of all pigs in the pen.

Move pigs to pen

The ID of the pen to which the pigs are to be moved should be entered in the "Move pigs to pen" text field. When the "Select pen" button is pressed, data for the pen with the specified ID will be displayed. This pen is then set as the recipient pen.

Move pigs

When the "Move pigs" button is pressed, the pigs to be moved are subtracted from the total number of pigs in the donor pen and added to the total number of pigs in the recipient pen. New average pig weights are then calculated for the pens concerned and the new data are shown on the display. The data are saved and a pen log object generated.

Close

When "Close" is selected, the program returns to the "Pen data" display.

Dead pigs

(See Appendix, figure 15)

This display is shown when the "Dead pigs" option is selected on the context menu of the "Pen data" display.

It allows dead pigs to be removed from a pen.

The pen from which the pigs are to be removed is specified at the top of the display. The number of pigs presently in the pen and their average weight are also shown.

The number of pigs to be recorded as dead should be entered in the "Number of pigs" text field.

The average weight of the dead pigs should be entered in the "Average weight (kg)" text field. The text field currently displays the average weight of all pigs in the pen.

When the "Remove pigs" button is pressed the number of dead pigs is deducted from the total number of pigs in the pen. A new average pig weight is then calculated for the pen concerned and the new data are shown on the display. The data are saved and a pen log object generated.

Close

When "Close" is selected, the program returns to the "Pen data" display.

Move sow

(See Appendix, figure 16)

This display is shown when the "Move sow" option is selected on the context menu of the "Pen data" display.

It allows sows to be moved from one pen to another.

The ID of the pen whose sows are to be shown should be entered in the "Display sows in pen" text field. When the "Display sows" button is pressed, the ID numbers of the sows presently in the specified pen will be displayed in the "Sows in pen" field on the left of the display.

To move a sow, first highlight the sow by pressing its ID.

Then enter the ID of the recipient pen in the "Move sow to pen" text box.

When the "Move sow" button is pressed, the sow highlighted in blue in the field on the left of the display will be moved. The sow in question will then be subtracted from the total number of sows in the donor pen and added to the total number of sows in the recipient pen. The data are saved and a pen log object generated.

Close

When "Close" is selected, the program returns to the "Pen data" display.

Add sow

(See Appendix, figure 17)

This display is shown when the "Add sow" option is selected on the context menu of the "Pen data" display.

It allows a sow to be added to a pen.

The ID of the pen whose sows are to be shown should be entered in the "Display sows in pen" text field. When the "Display sows" button is pressed, the ID numbers of the sows presently in the specified pen will be displayed in the "Sows in pen" field on the left of the display.

The ID number of the sow to be added to the pen should then be entered in the "Add sow to pen" text field. The ID must not exceed 6 characters.

When the "Add sow" button is pressed, a sow with the specified ID will be added to the pen. The sow is then added to the total number of sows in the pen. The data are saved and a pen log object generated.

Close

When "Close" is selected, the program returns to the "Pen data" display.

Delete sow

(See Appendix, figure 18)

This display is shown when the "Delete sow" option is selected on the context menu of the Pen data display.

It allows a sow to be deleted from a pen.

The ID of the pen whose sows are to be shown should be entered in the "Display sows in pen" text field. When the "Display sows" button is pressed, the ID numbers of the sows presently in the specified pen will be displayed in the "Sows in pen" field on the left of the display.

To delete a sow, first highlight the sow by pressing its ID.

Then press the "Delete sow" button to remove the sow highlighted in blue in the field on the left of the display. The deleted sow will then be subtracted from the total number of sows in the pen. The data are saved and a pen log object generated.

Close

When "Close" is selected, the program returns to the "Pen data" display.

Find sow

(See Appendix, figure 19)

This display is shown when the "Find sow" option is selected on the context menu of the "Pen data" display.

It allows specific sows to be located or the sows housed in a specific pen to be listed.

To locate a sow, the ID number of the sow concerned should be entered in the "Find sow" text field. When the "Find sow" button is pressed, the pen number in which the sow is located will be displayed. All other sows located in the same pen will also be displayed in the field at the bottom of the display.

To display the sows located in a specific pen, the ID number of the pen should be entered in the "Display sows in pen" text field. When the "Display sows" button is pressed, all sows presently located in the specified pen will be shown in the field at the bottom of the display.

Close

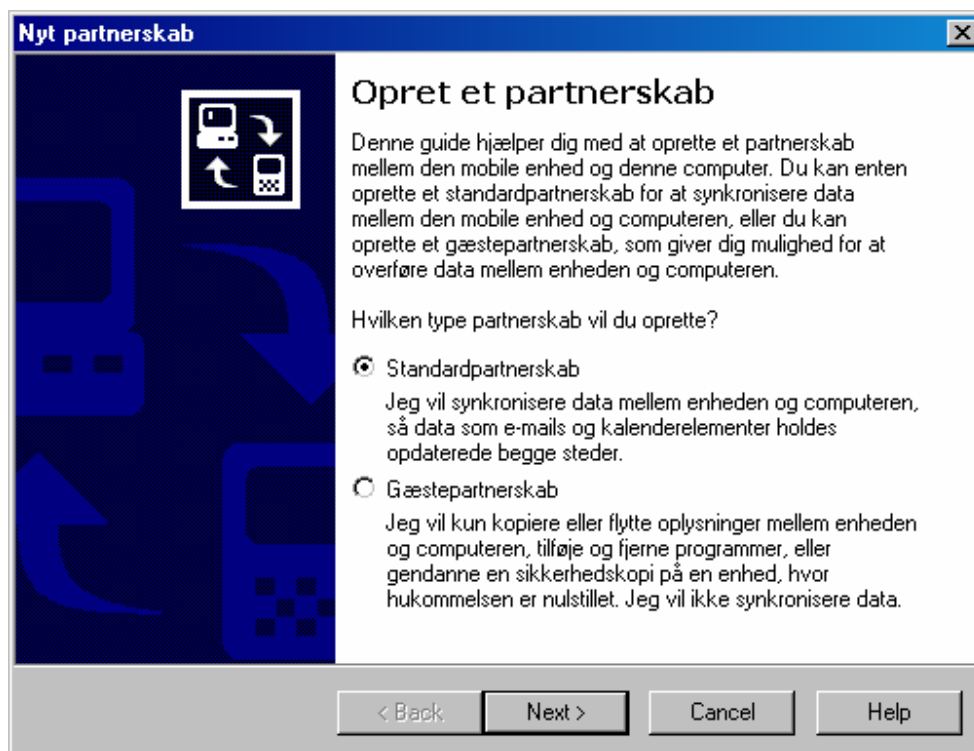
When "Close" is selected, the program returns to the "Pen data" display.

Appendix

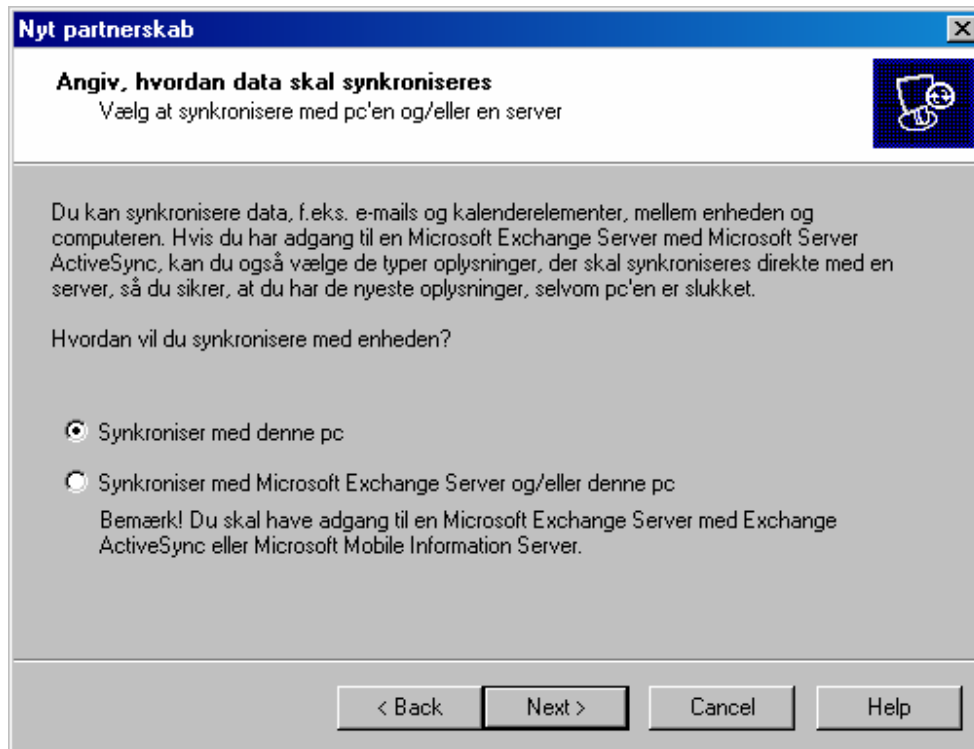
Creating a partnership between PC and PDA

A partnership must be created to prevent Active Sync from requesting the creation of a partnership whenever the PDA is placed in the docking station. The procedure for creating a partnership is described in the following.

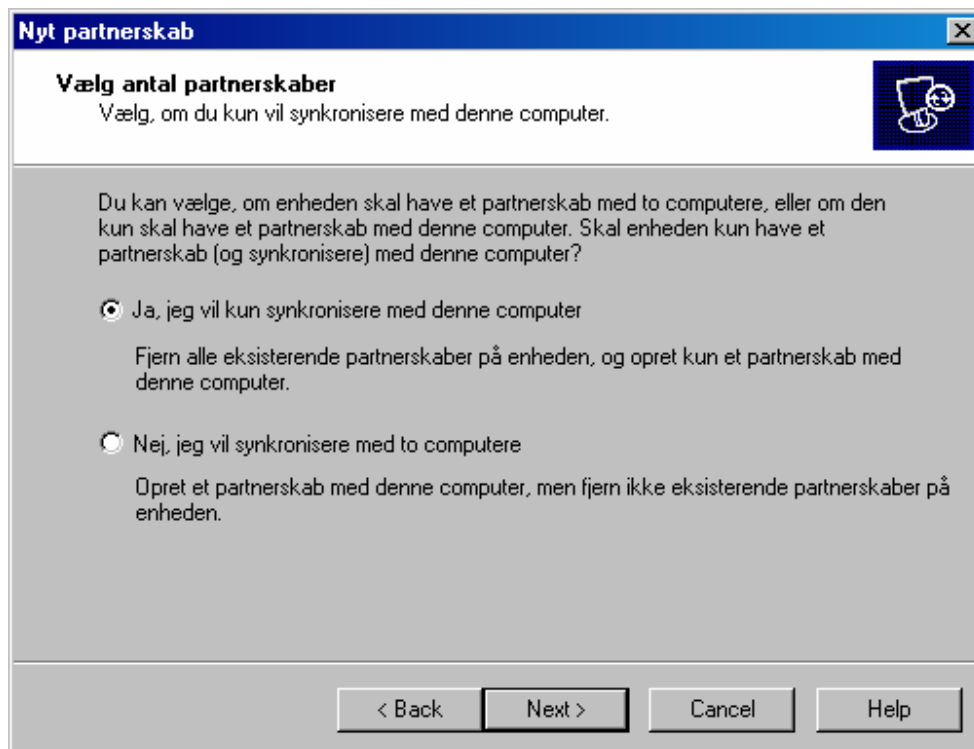
Place the PDA in the docking station and connect the docking station to the PC. ActiveSync will then activate the "Create partnership" display. Select "Standard partnership" and then click "Next".



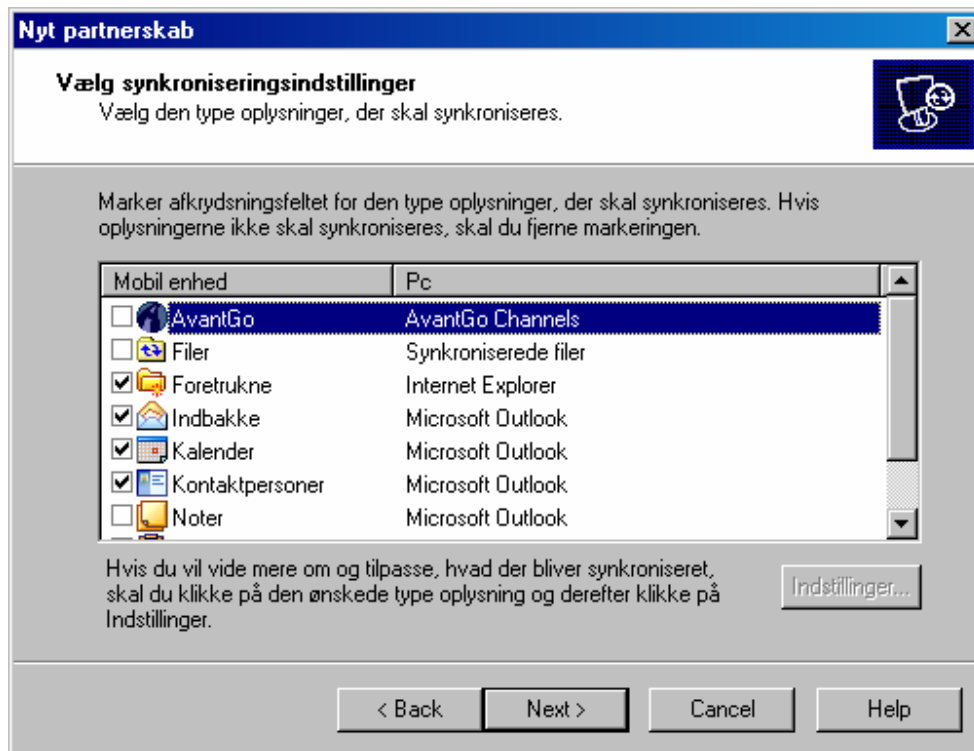
Select "Synchronise with this PC" and then click "Next".



If the PDA already has a partnership with another PC, a "Select number of partnerships" display appears. Select either "Yes, synchronise with this computer alone" to synchronise the PDA solely with the current PC, or "No, synchronise with two computers" to synchronise the PDA with the current PC while maintaining another partnership. Then click "Next".



Select the types of data to be updated automatically between the PC and the PDA (Funkinet Pocket does not use ActiveSync for synchronisation purposes so in this case it is not necessary to select any types at all). Then click "Next".



Click "Finish" to complete partnership creation.

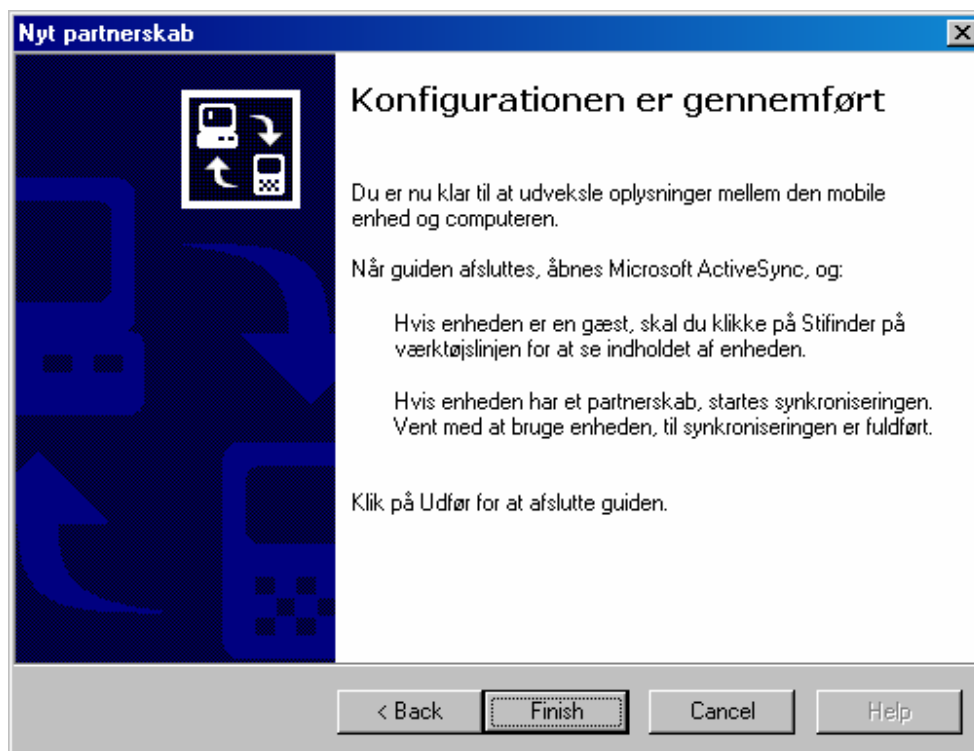


Figure 1 – Main display



Figure 2 – About FunkiNet Pocket



Figure 3 – IP address



Figure 4 – Select language



Figure 5 – Password



Figure 6 – Pen data (Menu)



Figure 7 – Pen data (Select profile)



Figure 8 – Pen data (Context menu)



Figure 9 – Transmit pen data



Figure 10 – Cancel changes



Figure 11 – Confirm



Figure 12 – Select section



Figure 13 – Profiles



Figure 14 – Move pigs



Figure 15 – Dead pigs



Figure 16 – Move sow



Figure 17 – Add sow



Figure 18 – Delete sow



Figure 19 – Find sow



