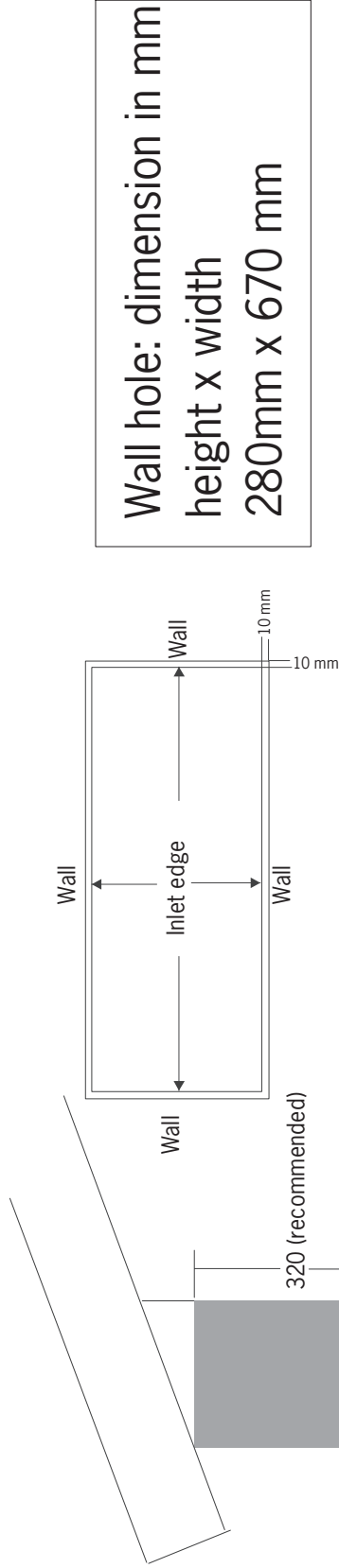
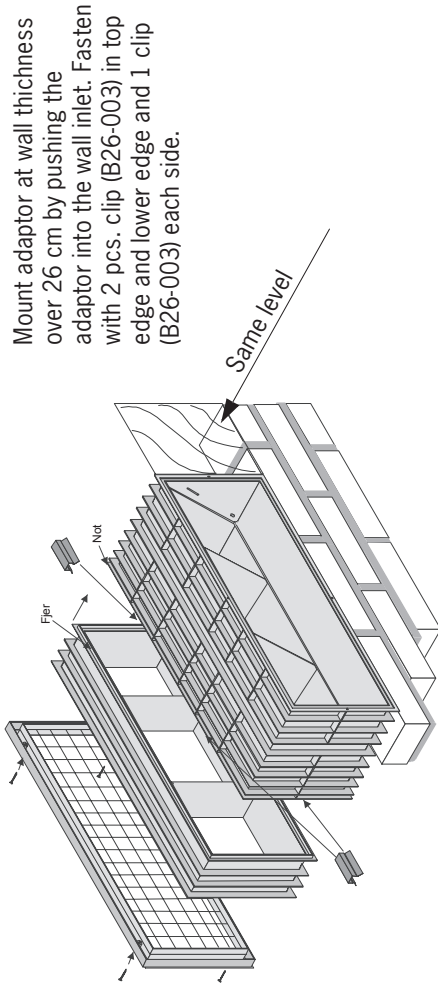


Wall inlet WI

Assembly instruction wall inlet WI

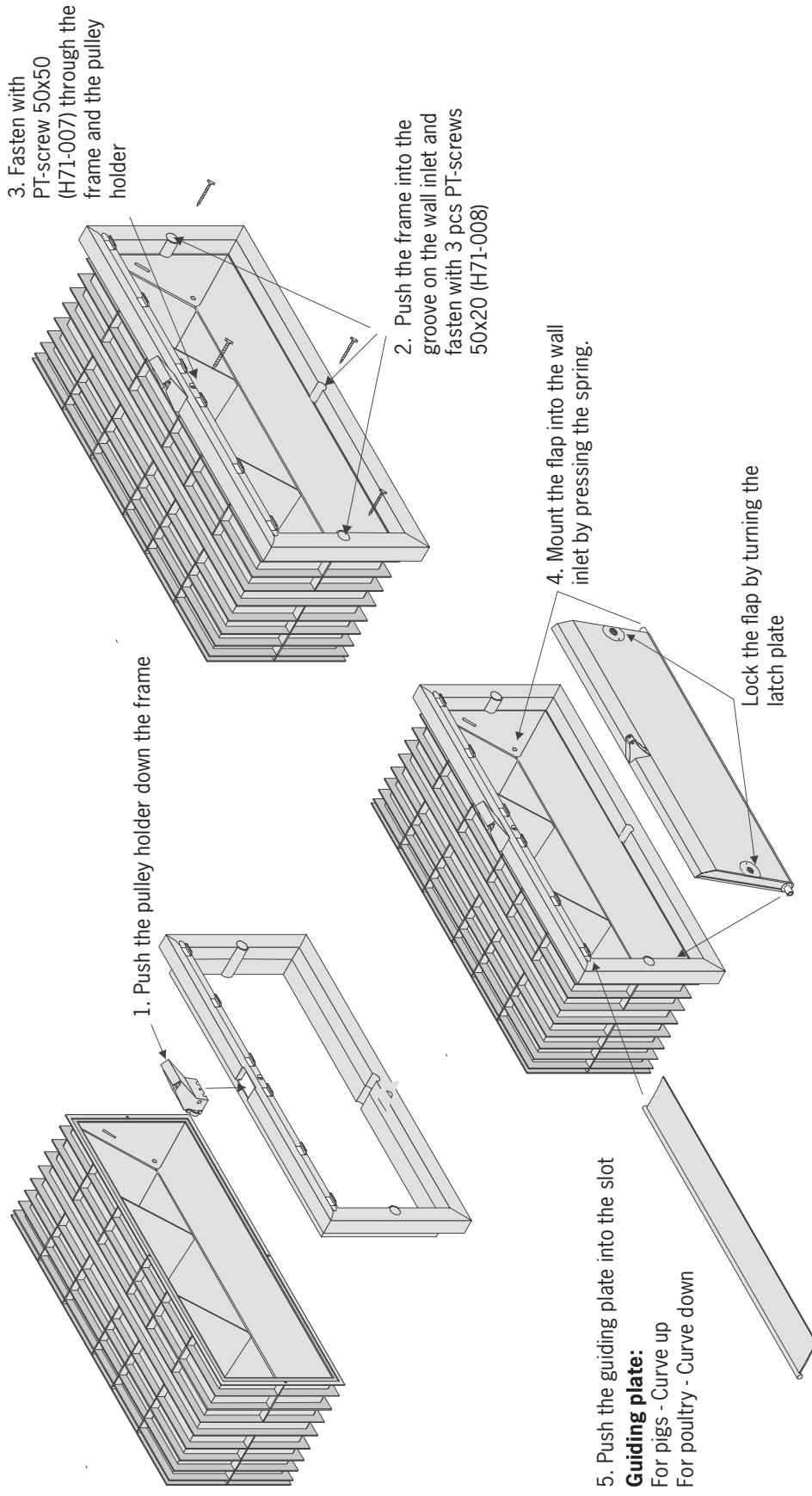


1. The wall inlet is centered in the wall hole with spacer
2. The wall inlet "must" be flush with the in side wall. The inside is not frame mounted.
3. Fit the wall inlet temporarily with corner wedges.
4. Fasten the wall inlet in the corners with polyurethane foam.
5. Stuff with insulation material between the wall and the inlet before jointing with silicone.
6. Screw the net onto the wall inlet with 4 pcs. PT screws 50x12 (H71-006)



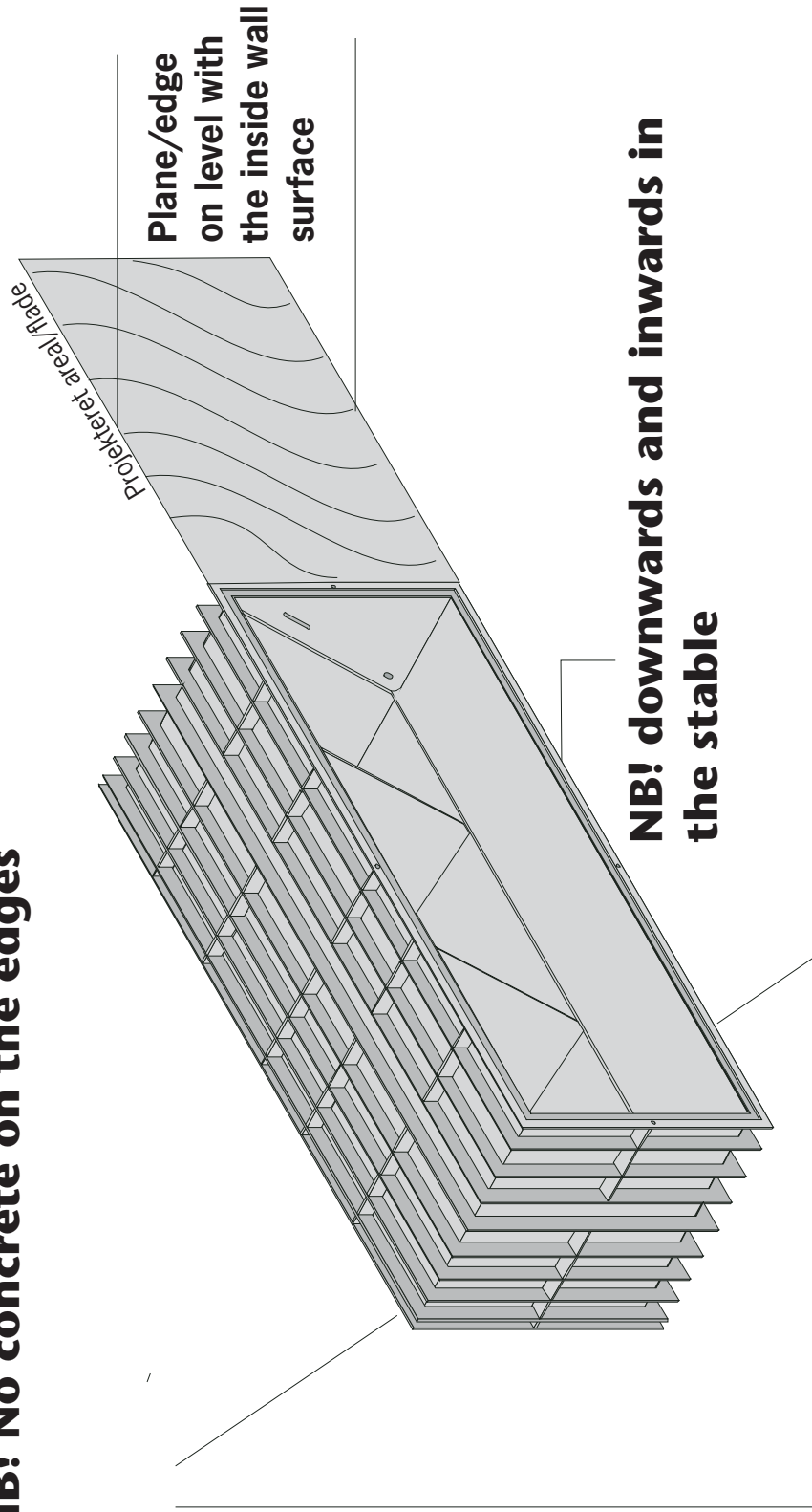
Important!
Acid mortar etc. at the edges of wall inlet, because of problems when assembling th wall inlet.

Assembly instruction wall inlet WI



Concreting the Wall inlet WI

NB! No concrete on the edges



Mounting the wire pulling system onto the wall inlets

The wall inlets must be closed when mounting the wire pulling system

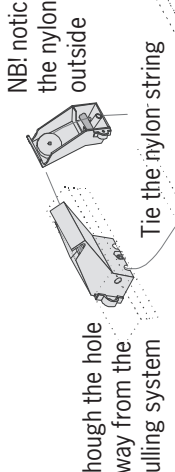
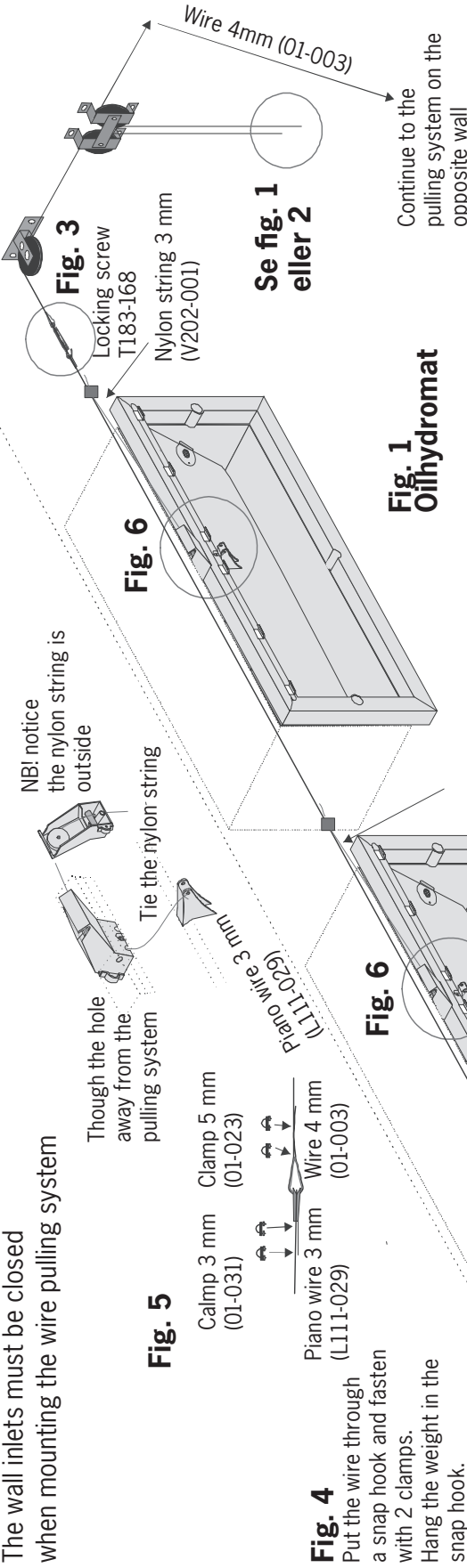


Fig. 5



Fig. 6



Fig. 4

Put the wire through a snap hook and fasten with 2 clamps. Hang the weight in the snap hook.

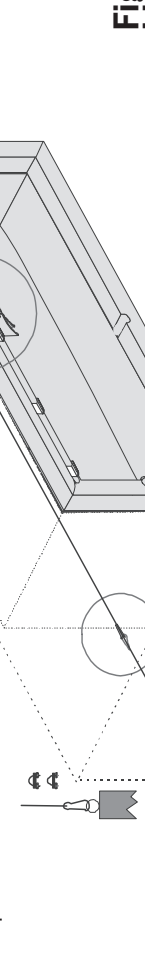


Fig. 2 Linak LA32

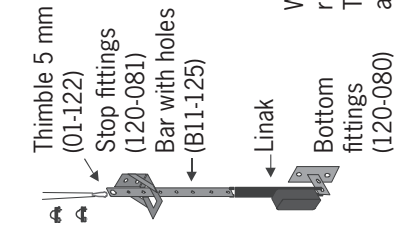
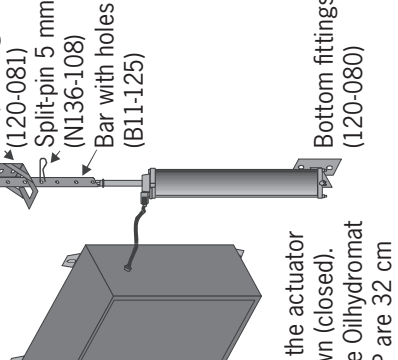


Fig. 1 Oilhydromat



When adjusting, the actuator rod must be down (closed). The stroke of the Oilhydromat and Linak LA32P are 32 cm

