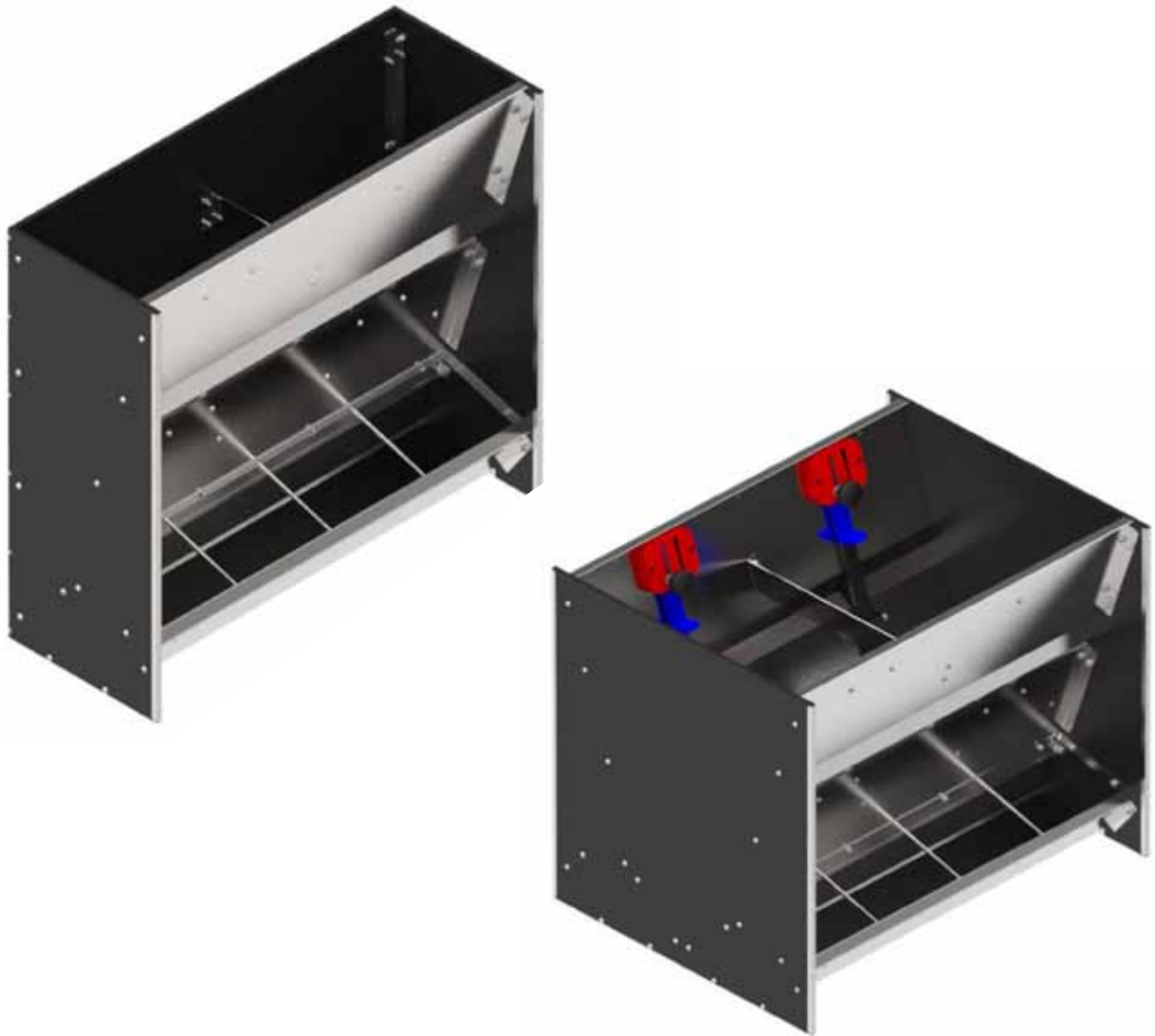


# MOUNTING INSTRUCTION



## BOX FEEDERS WEANERS

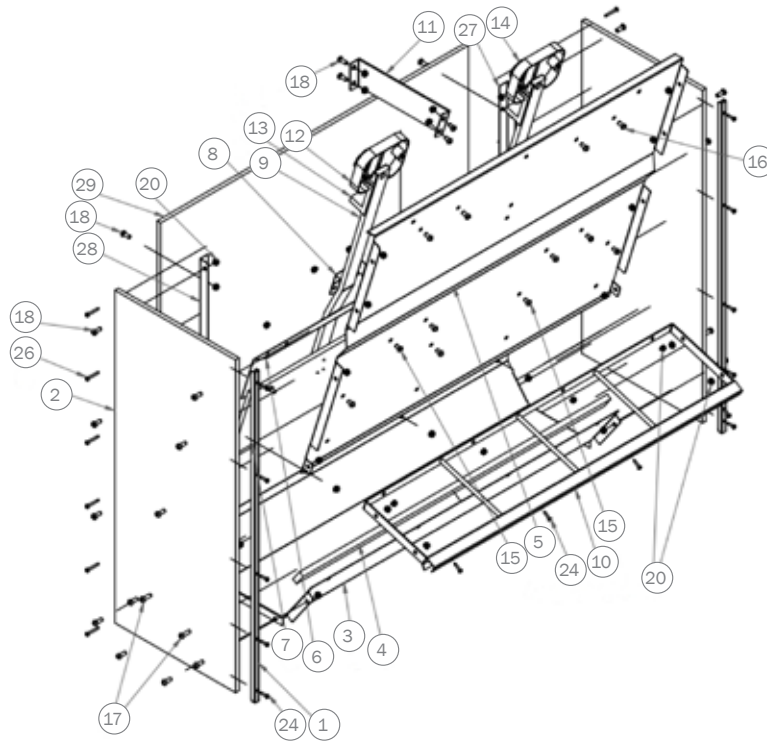


**ACO FUNKI A/S**  
Kirkevænget 5  
DK-7400 Herning

Tel. +45 9711 9600  
Fax +45 9711 9677  
[www.acofunki.com](http://www.acofunki.com)

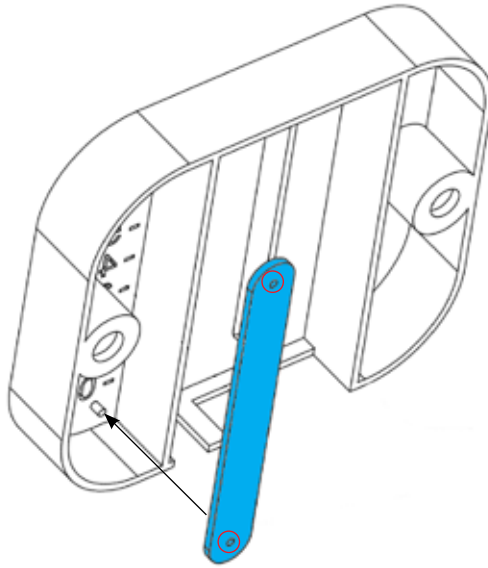
**DANISH DESIGN | GERMAN QUALITY | GLOBAL EXPERIENCE**

## PARTS LIST ON BOX FEEDERS - WEANERS



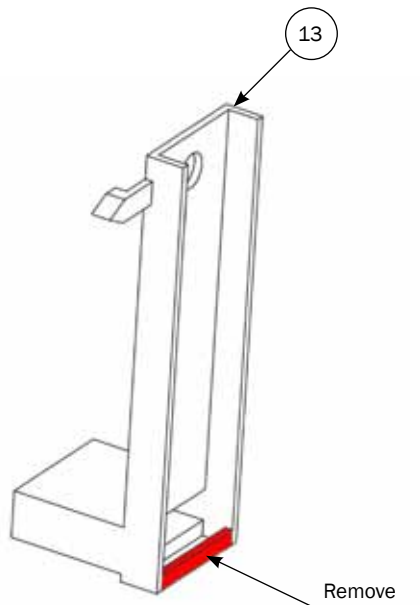
No	ITEM No.					DESCRIPTION
	560042U 2X1 RF TROUGH	560043U 3X1 RF TROUGH	560044U 4X1 RF TROUGH	560045U 5X1 RF TROUGH	560046U 6X1 RF TROUGH	
1	2	2	2	2	2	SIDE FERRULE
2	2	2	2	2	2	SIDE
3	1	1	1	1	1	TROUGH
4	1	1	1	1	1	C-PROFILE INSERT
5	1	1	1	1	1	FRONT PLATE
6	1	1	1	1	1	SLIDER PROTECTION
7	1	1	1	1	1	SLIDER
8	1	1	2	2	2	GROMMET
9	1	1	2	2	2	PULLING BAR
10	1	1	1	1	1	FRAME
11	0	0	1	1	2	BRACKET
12	1	1	2	2	2	REGULATION BODY
13	1	1	2	2	2	REGULATION GAUGE
14	1	1	2	2	2	REGULATION KNOB
15	6	9	14	16	20	BUTTON HEAD BOLT ISO 7380 - M6X10MM
16	2	2	4	4	4	BUTTON HEAD BOLT ISO 7380 - M6X12MM
17	4	4	4	4	4	BUTTON HEAD BOLT ISO 7380 - M6X20MM
18	31	31	34	35	38	BUTTON HEAD BOLT ISO 7380 - M6X16MM
19	1	1	2	2	2	HEXAGON HEAD BOLT DIN 933 - M8X25MM
20	43	46	56	59	66	SELF-LOCKING NUT DIN 985 - M6
21	1	1	2	2	2	SELF-LOCKING NUT DIN 985 - M8
22	2	2	4	4	4	WASHER DIN 125A - 6.4MM
23	1	1	2	2	2	WASHER DIN 9021 - 8.4MM
24	13	13	14	14	15	SCREW 3.5X19MM
25	6	6	6	6	6	SCREW 4X20MM
26	12	12	12	12	12	SCREW 4X35MM
27	1	1	1	1	1	RIGHT ANGLE STEEL
28	1	1	1	1	1	LEFT ANGLE STEEL
29	1	1	1	1	1	BACK PLATE

## PREPARING OF REGULATION BODY



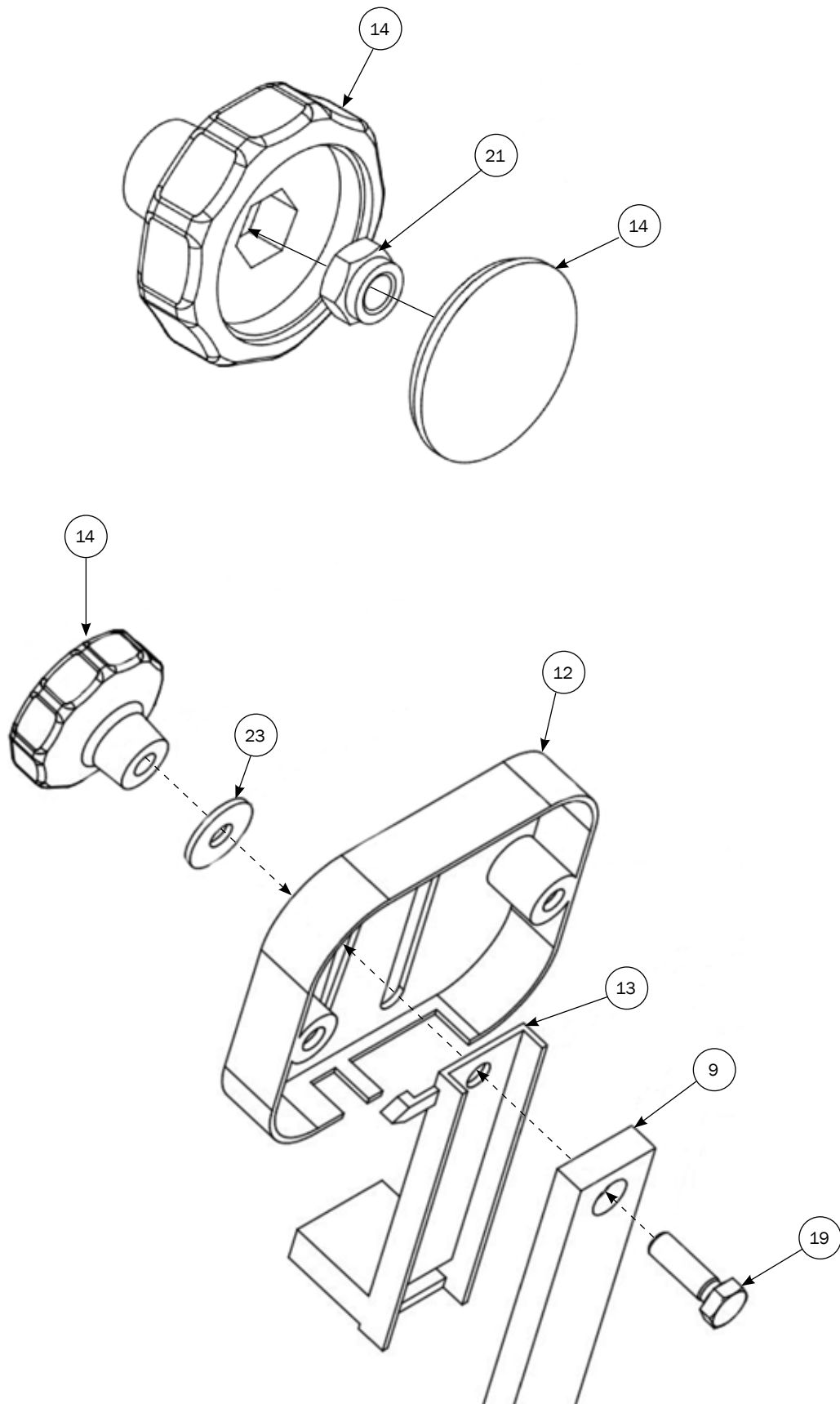
---

## PREPARING OF REGULATION GAUGE



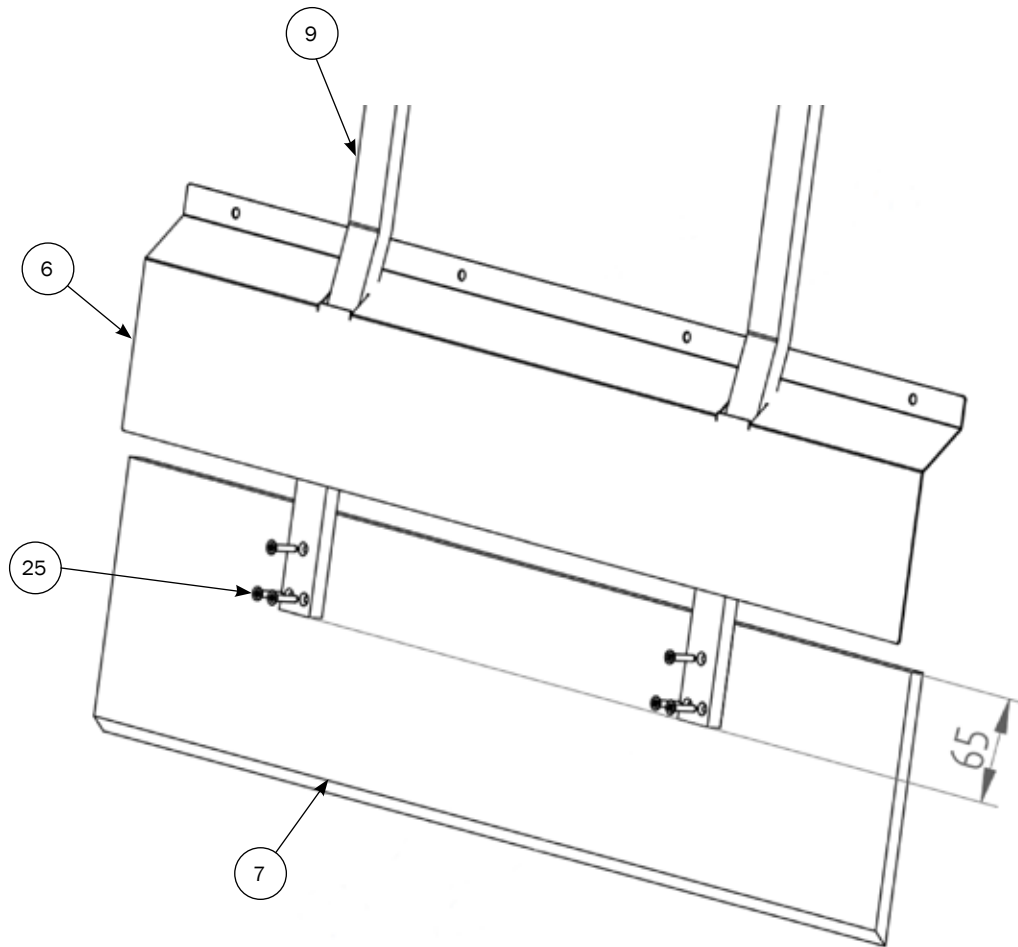
## MOUNTING OF REGULATION KNOB

For parts list: look at page 2



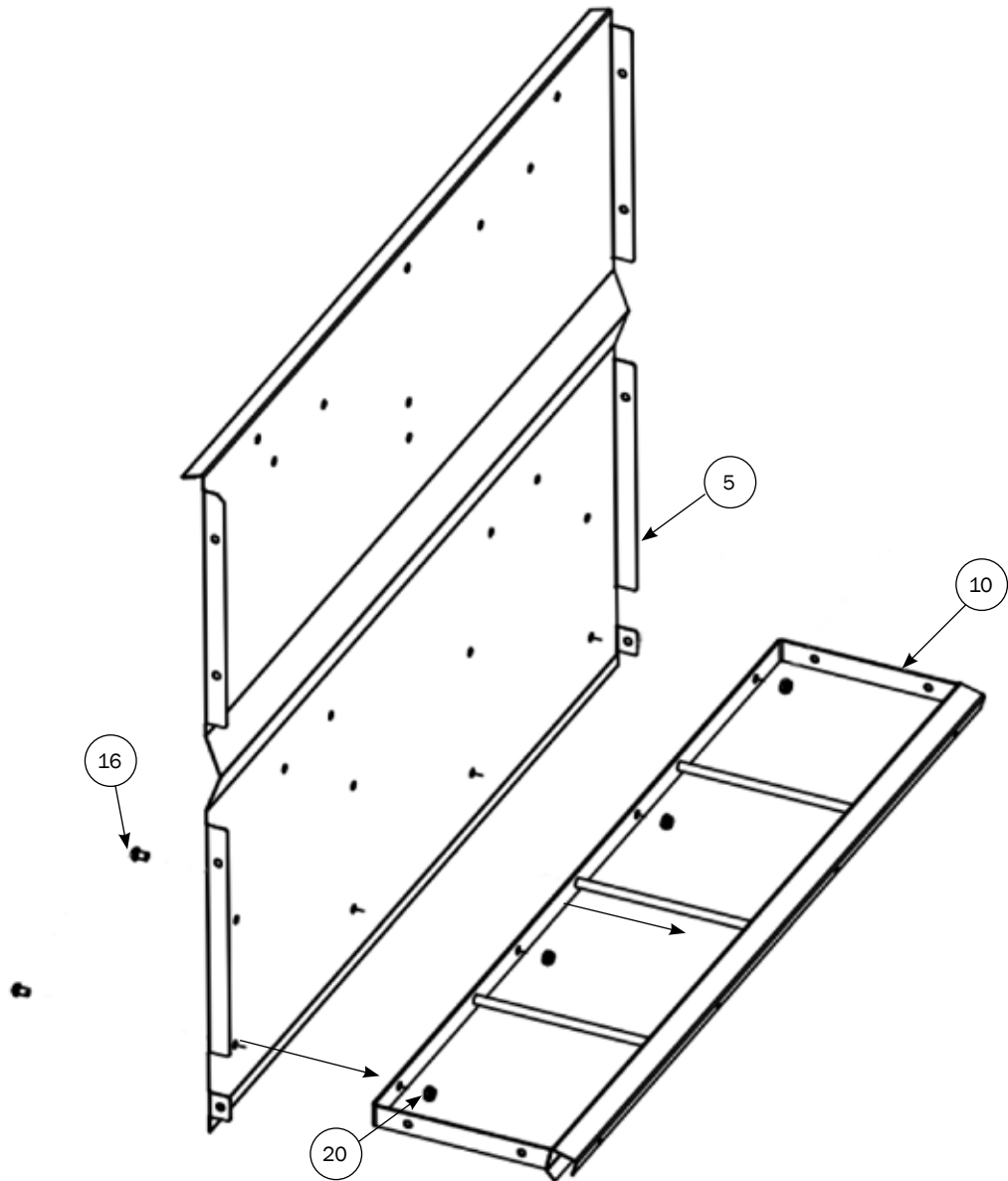
## MOUNTING OF SLIDER AND FRAME

For parts list: look at page 2



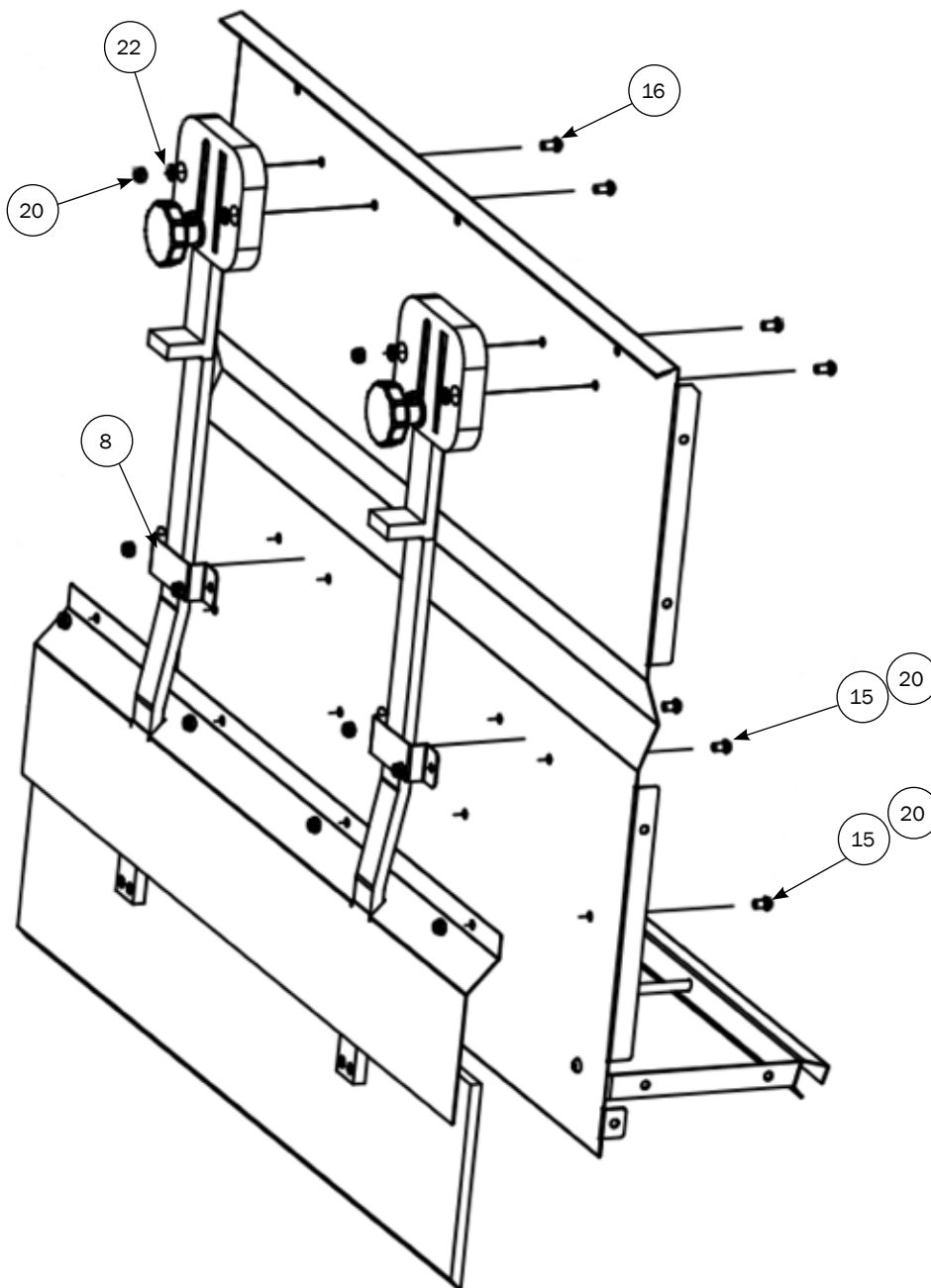
## MOUNTING OF FRONT PLATE ON FRAME

For parts list: look at page 2



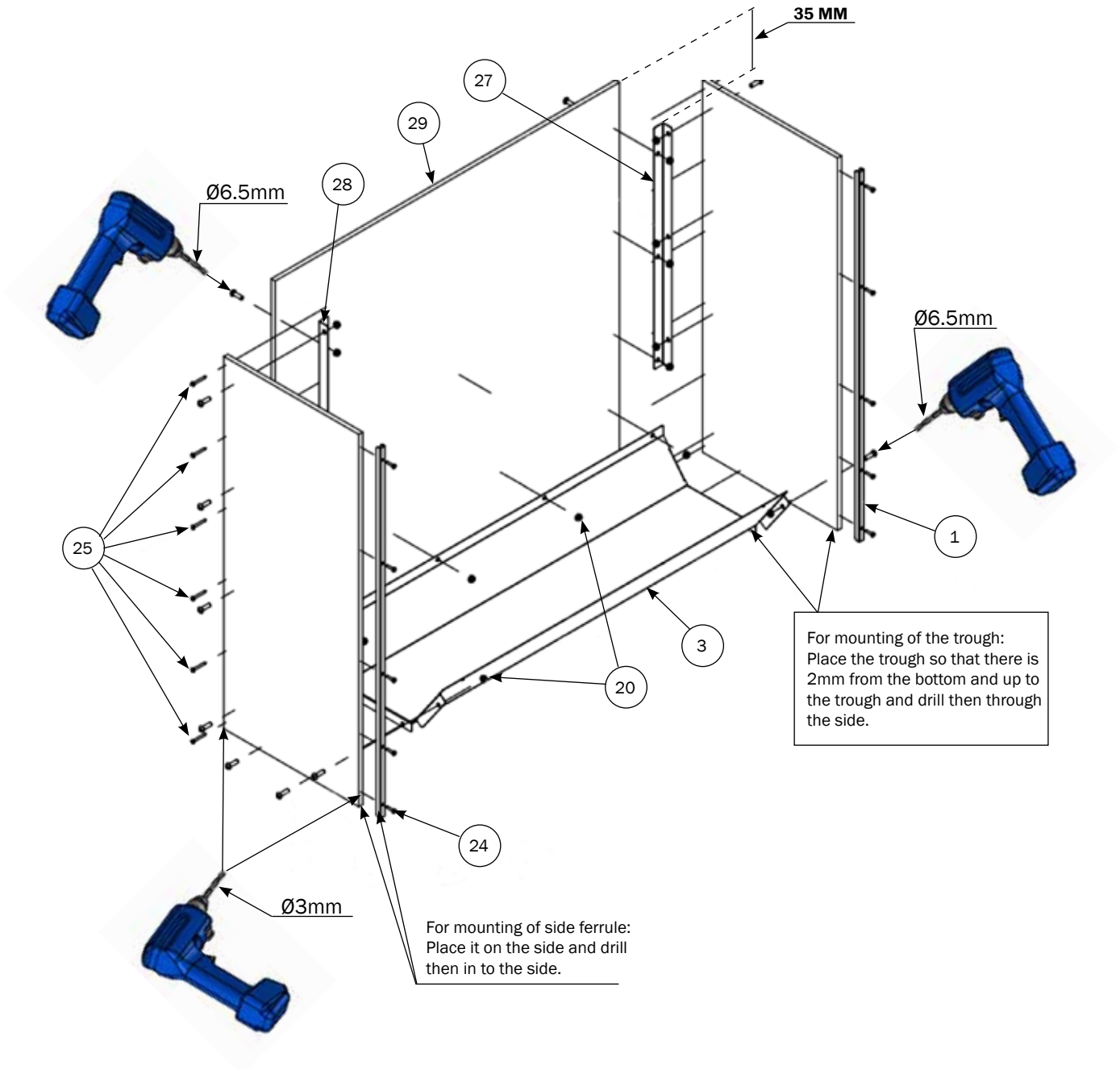
## MOUNTING OF REGULATION KNOBS ON FRONT PLATE

For parts list: look at page 2



# MOUNTING OF SIDE FERRULES AND TROUGH ON BOX FEEDERS

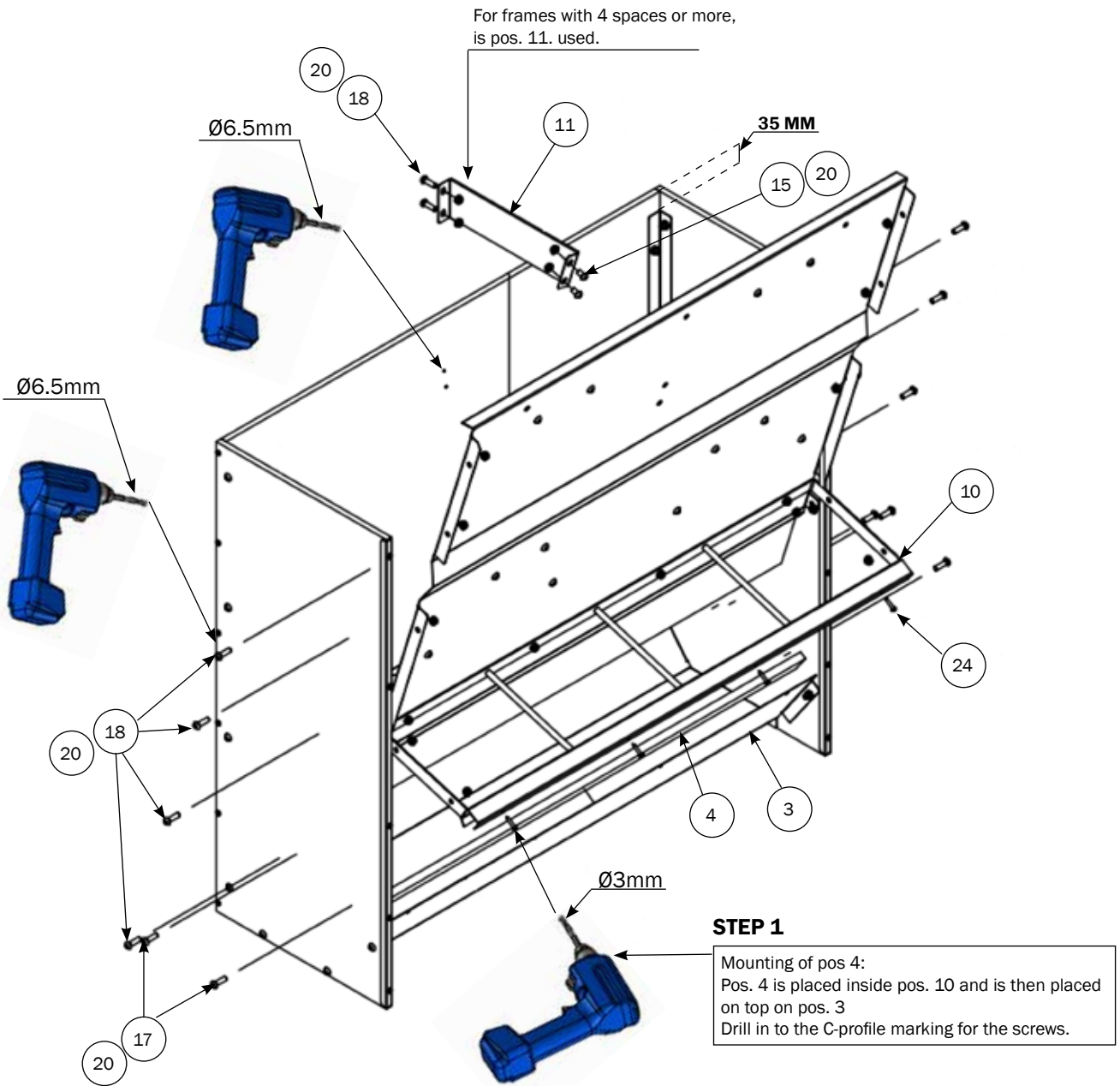
For parts list: look at page 2



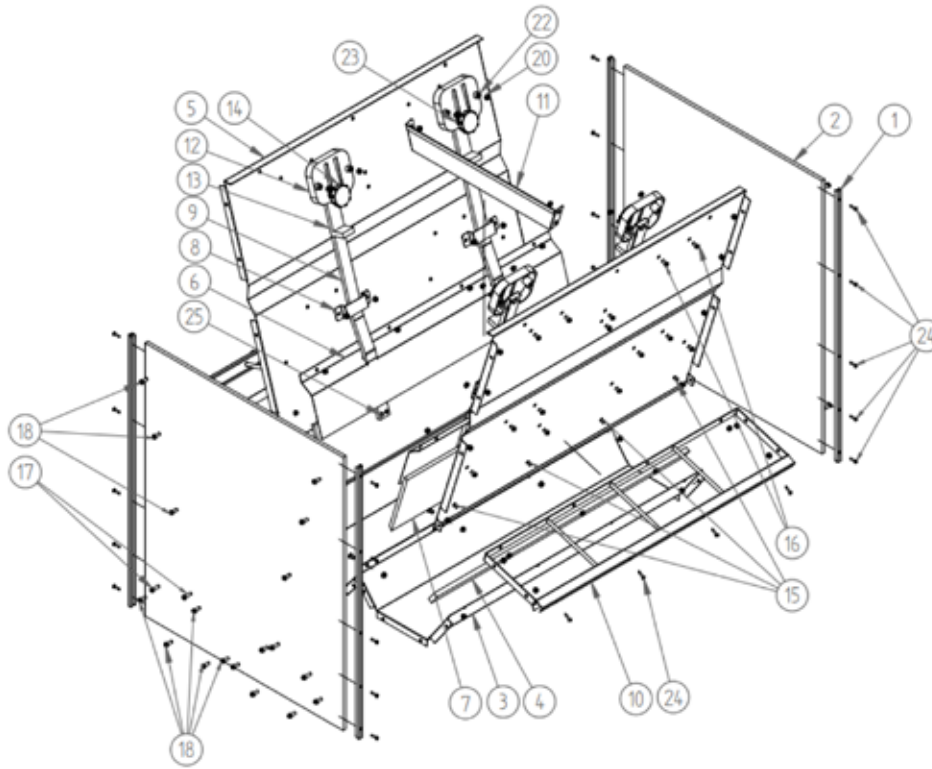


## MOUNTING OF FRONT PLATE ON THE SIDES

For parts list: look at page 2

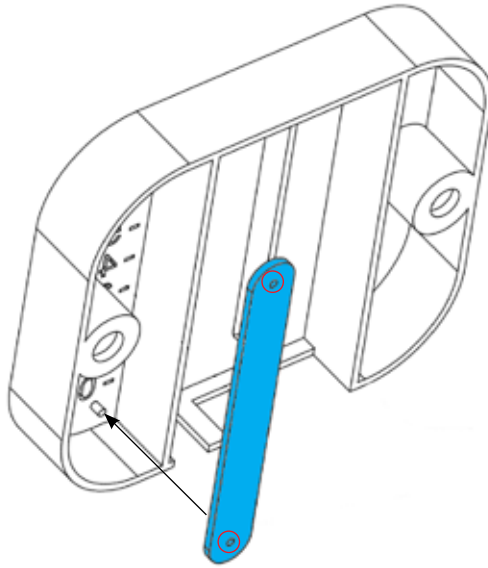


## PARTS LIST FOR DOUBLE BOX FEEDERS - WEANERS



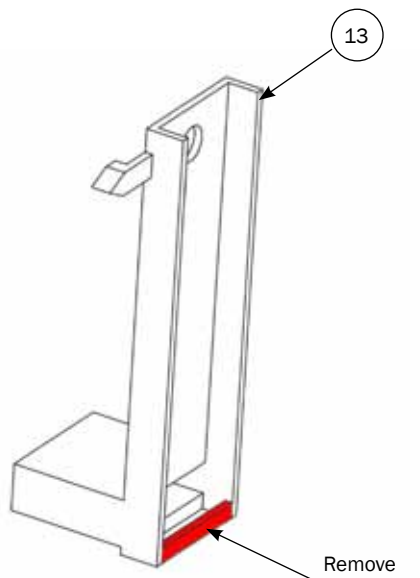
No	ITEM No.					DESCRIPTION
	560052U 2X2 RF TROUGH	560053U 3X2 RF TROUGH	560054U 4X2 RF TROUGH	560055U 5X2 RF TROUGH	560056U 6X2 RF TROUGH	
1	4	4	4	4	4	SIDE FERRULE
2	2	2	2	2	2	SIDE
3	2	2	2	2	2	TROUGH
4	2	2	2	2	2	C-PROFILE INSERT
5	2	2	2	2	2	FRONT PLATE
6	2	2	2	2	2	SLIDER PROTECTION
7	2	2	2	2	2	SLIDER
8	2	2	4	4	4	GROMMET
9	2	2	4	4	4	PULLING BAR
10	2	2	2	2	2	FRAME
11	0	0	1	1	2	BRACKET
12	2	2	4	4	4	REGULATION BODY
13	2	2	4	4	4	REGULATION GAUGE
14	2	2	4	4	4	REGULATION KNOB
15	15	21	32	37	46	BUTTON HEAD BOLT ISO 7380 - M6X10MM
16	4	4	8	8	8	BUTTON HEAD BOLT ISO 7380 - M6X12MM
17	8	8	8	8	8	BUTTON HEAD BOLT ISO 7380 - M6X20MM
18	32	32	32	32	32	BUTTON HEAD BOLT ISO 7380 - M6X16MM
19	2	2	4	4	4	HEXAGON HEAD BOLT DIN 933 - M8X25MM
20	59	65	80	85	94	SELF-LOCKING NUT DIN 985 - M6
21	2	2	4	4	4	SELF-LOCKING NUT DIN 985 - M8
22	4	4	8	8	8	WASHER DIN 125A - 6.4MM
23	2	2	4	4	4	WASHER DIN 9021 - 8.4MM
24	24	26	28	28	30	SCREW 3.5X19MM
25	6	6	12	12	12	SCREW 4X20MM

## PREPARING OF REGULATION BODY



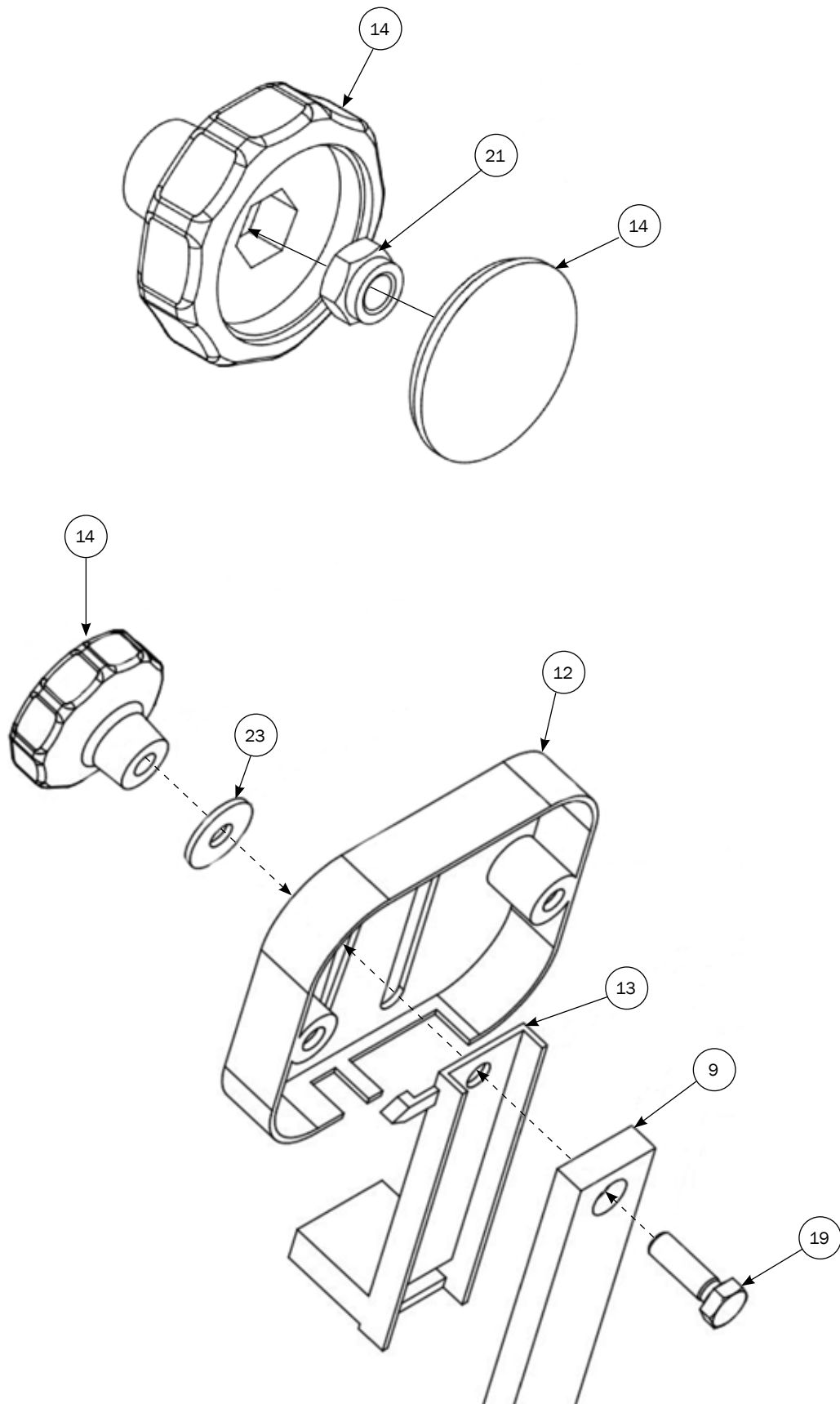
---

## PREPARING OF REGULATION GAUGE



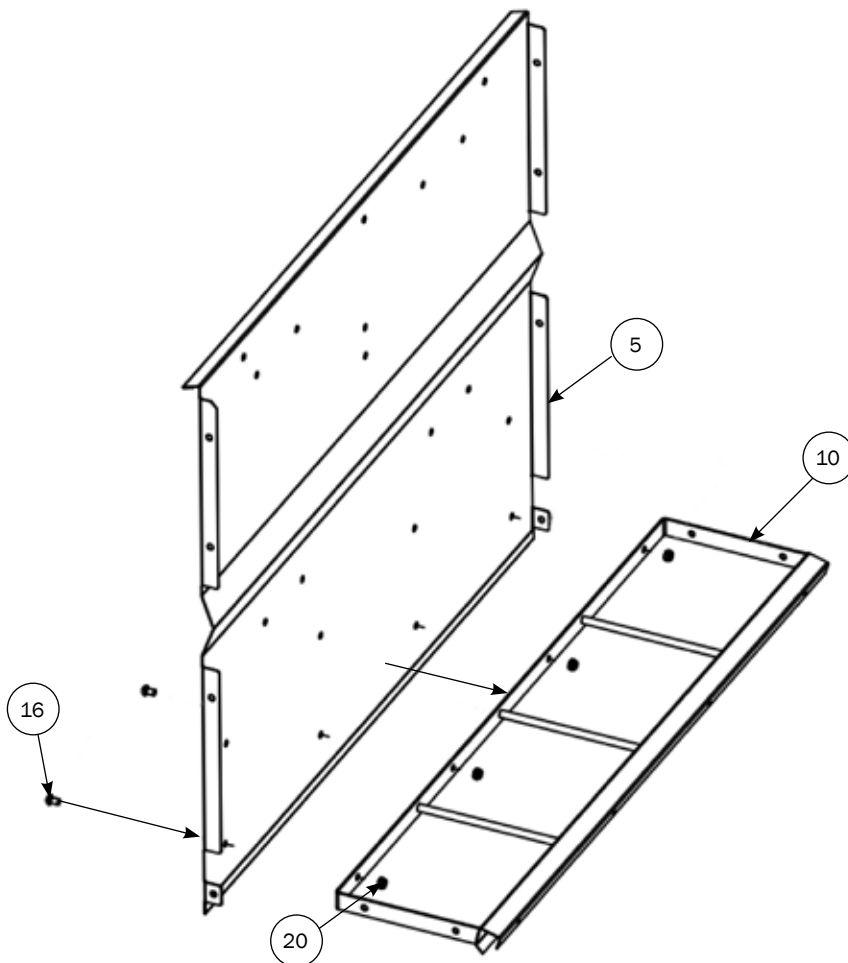
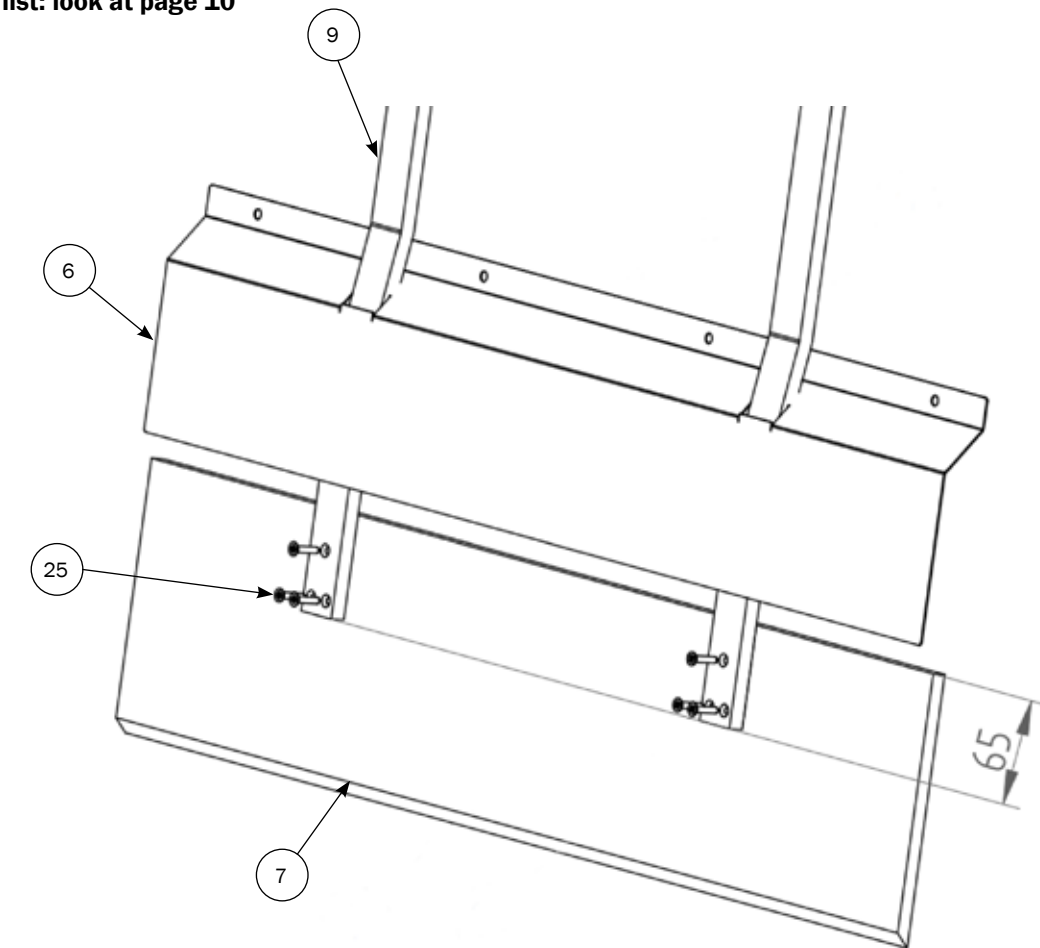
## MOUNTING OF REGULATION KNOB

For parts list: look at page 10



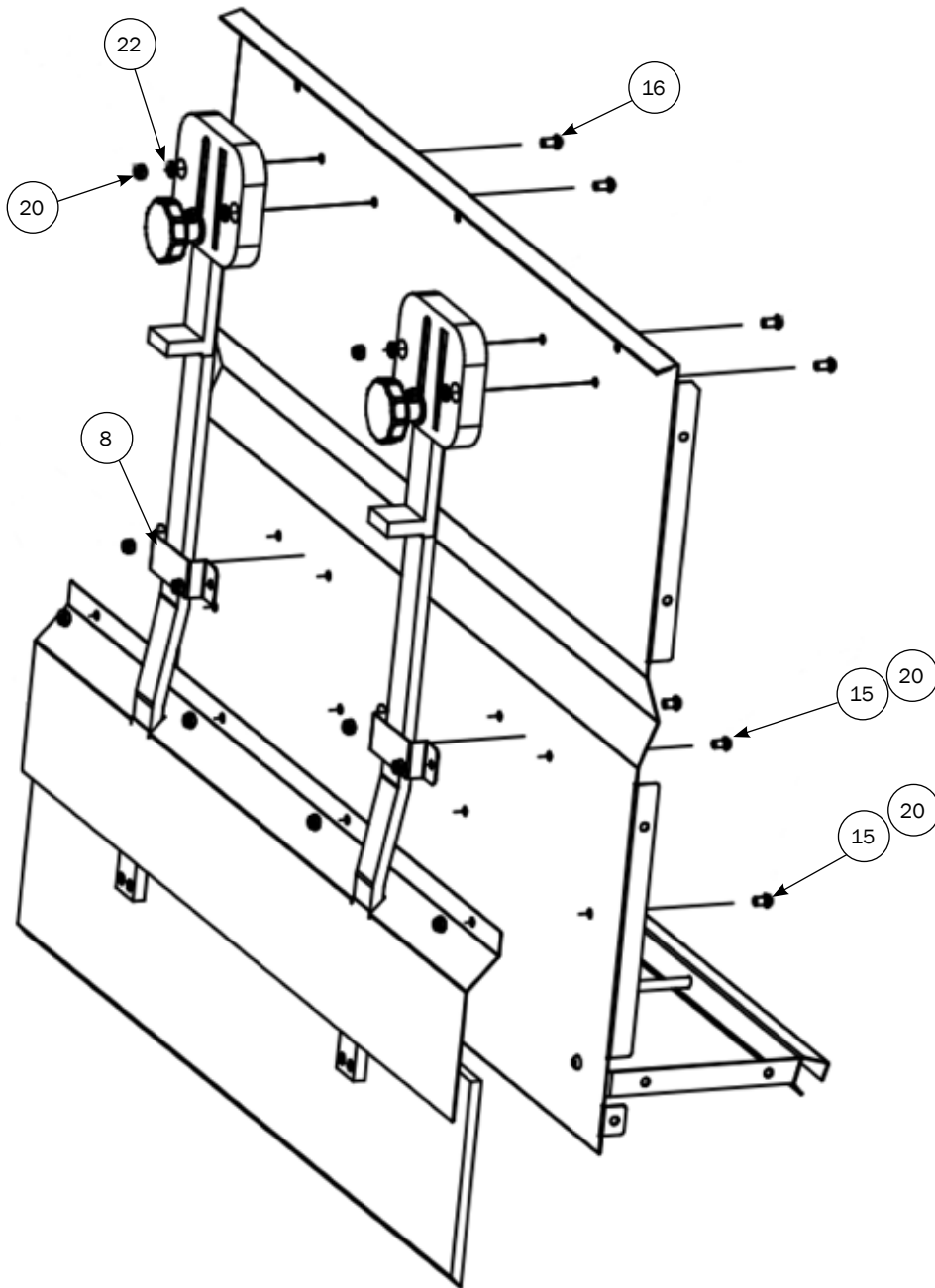
## MOUNTING OF SLIDER AND FRAME

For parts list: look at page 10



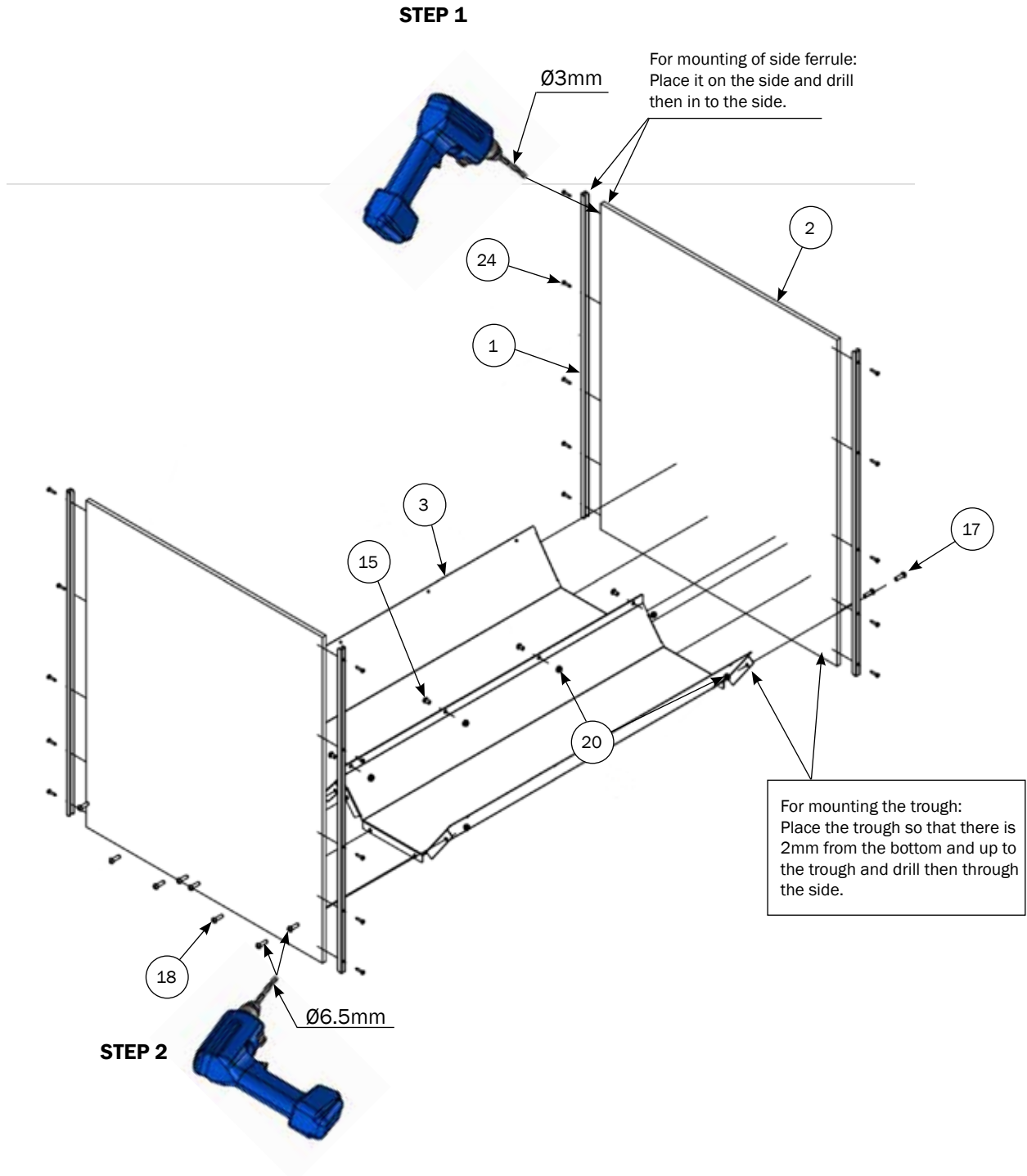
## MOUNTING OF REGULATION KNOBS ON FRONT PLATE

For parts list: look at page 10



# MOUNTING OF FERRULE AND TROUGH ON DOUBLE BOX FEEDERS

For parts list: look at page 10



## MOUNTING OF FRONT PLATES ON THE SIDES

For parts list: look at page 10

