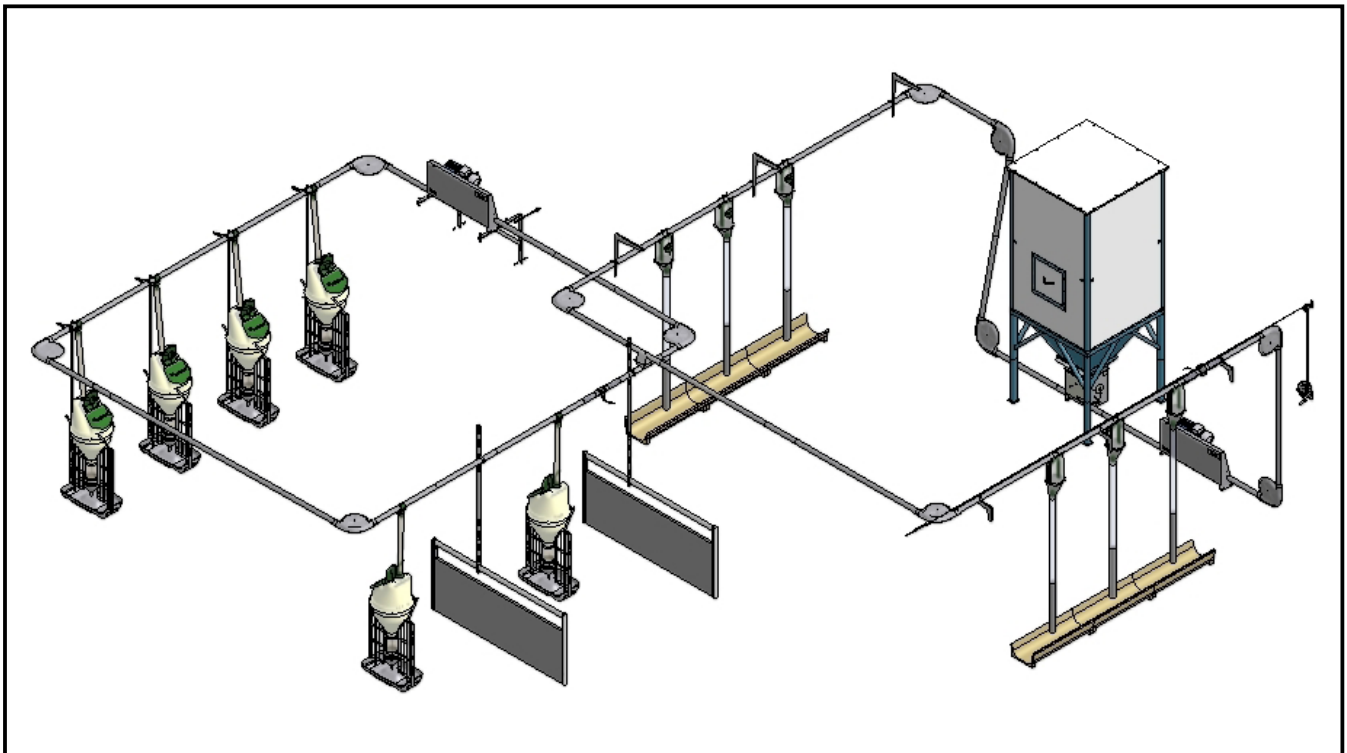


Mounting instructions

System installation on dryfeeding system
M-1023-GB

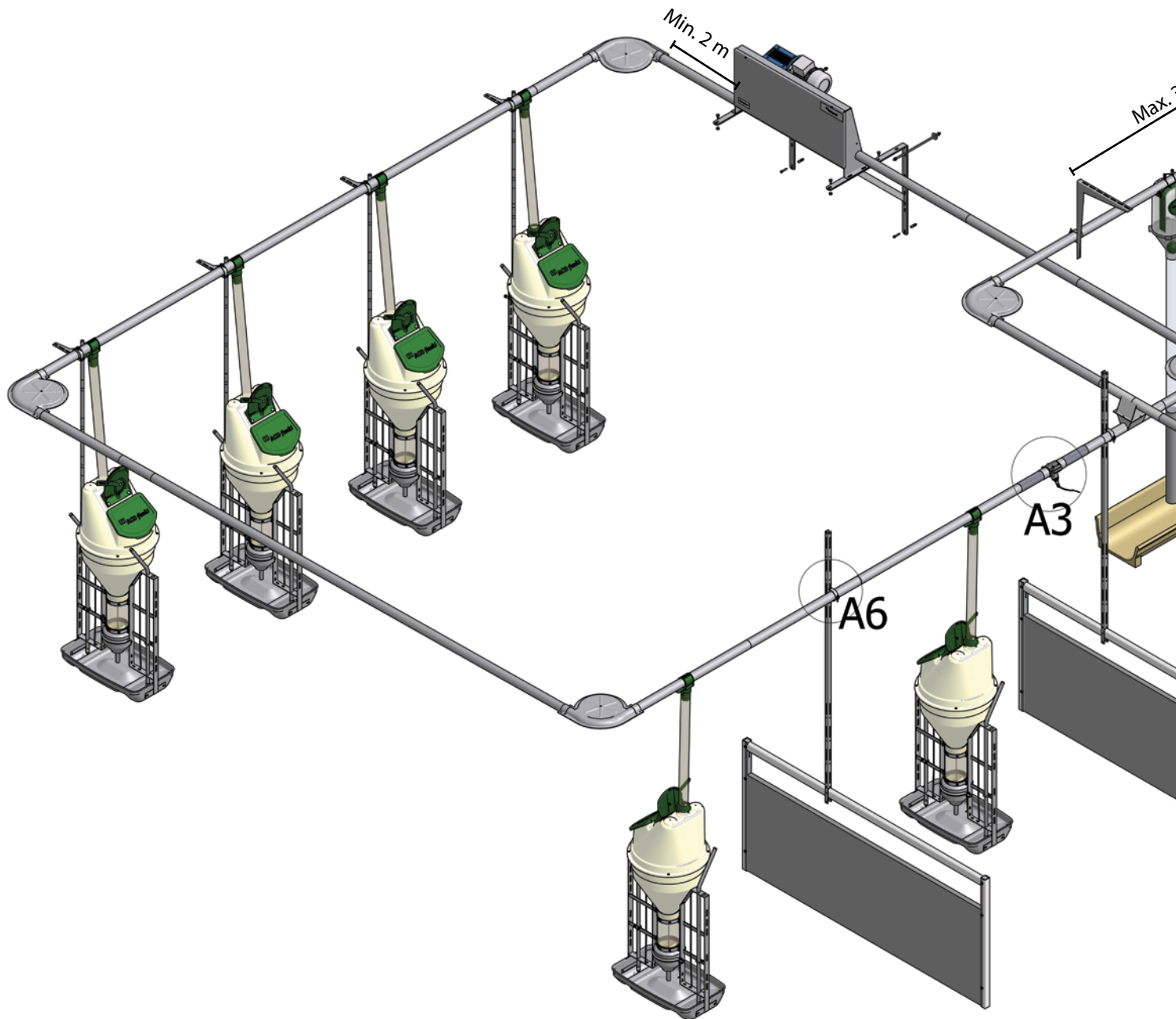


Danish Design
German Quality
Global Experience



ACO Funki

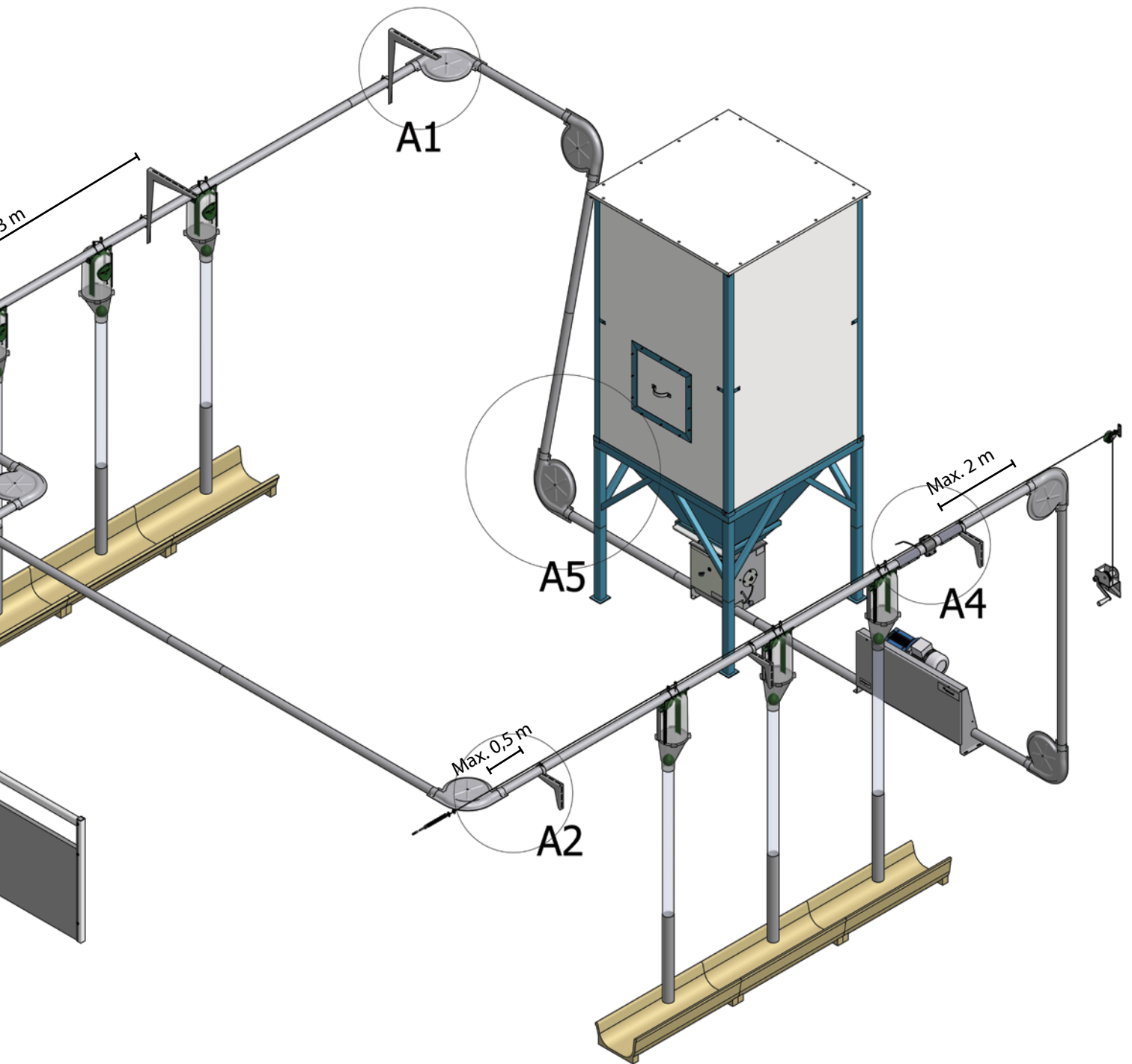
Model A



M-1023-2



ACO Funki

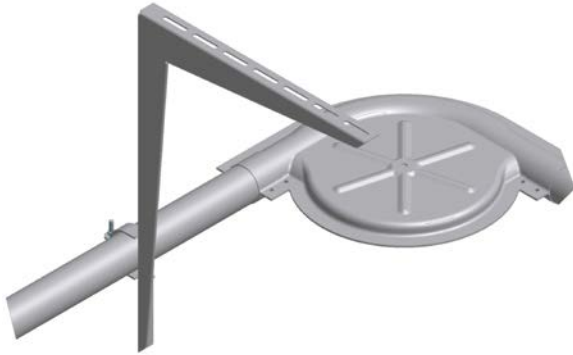


M-1023-3

ACO Funki

Model A

Detail views



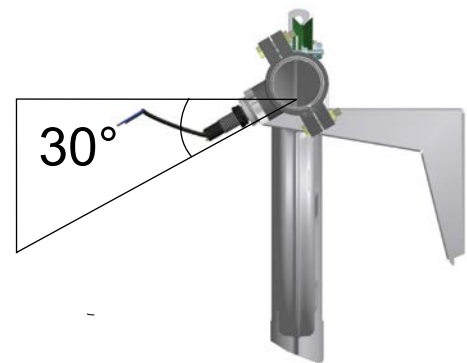
A1 - Mounting on ceiling



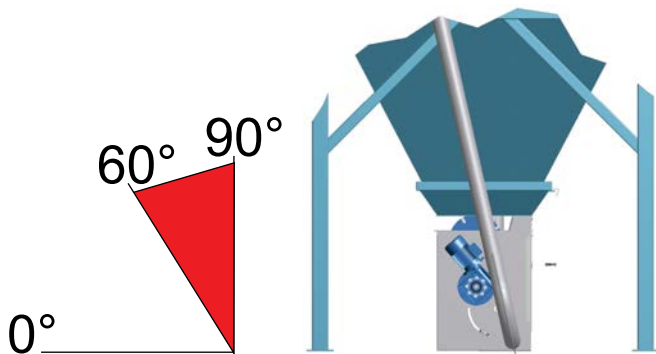
A2 - Mounting on wall



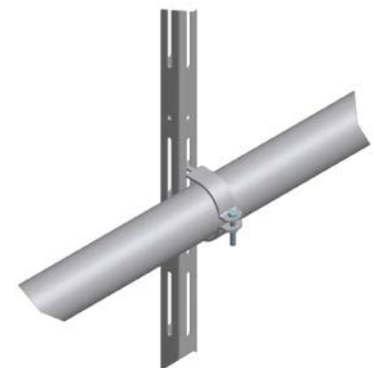
A3 - Sensor



A4 - Mounting of sensor 30°



A5 - Mounting by feeding max. 60°

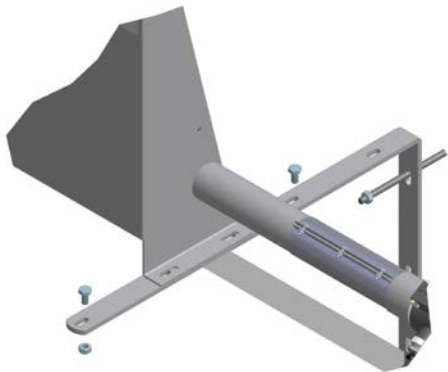


A6 - Mounting on Pen equipment

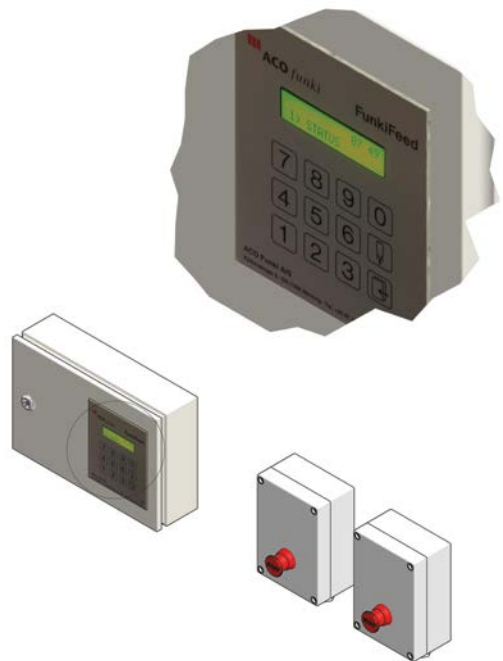
ACO Funki

Model B

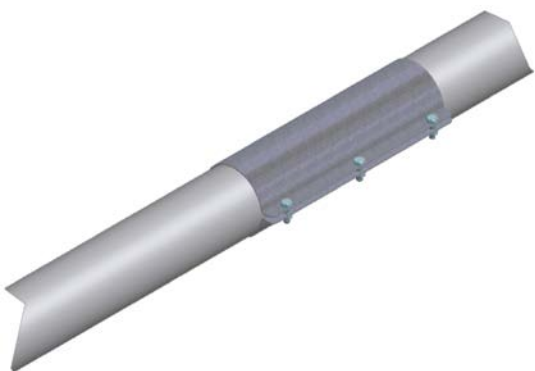
Detail views



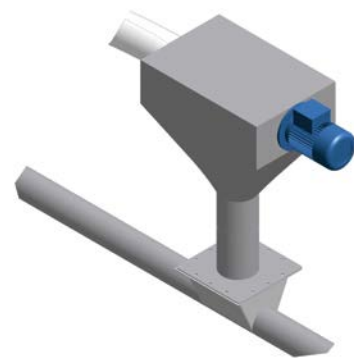
B1 - Drive unit on wall



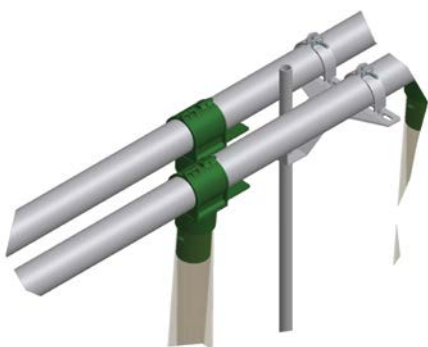
B2 - Funkifeed with overlay switch



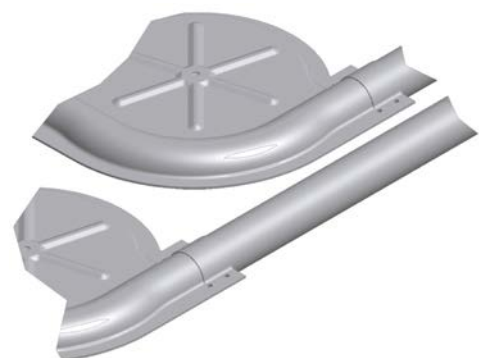
B3 - The connector opening must point sideways



B5 - Inlet flex auger



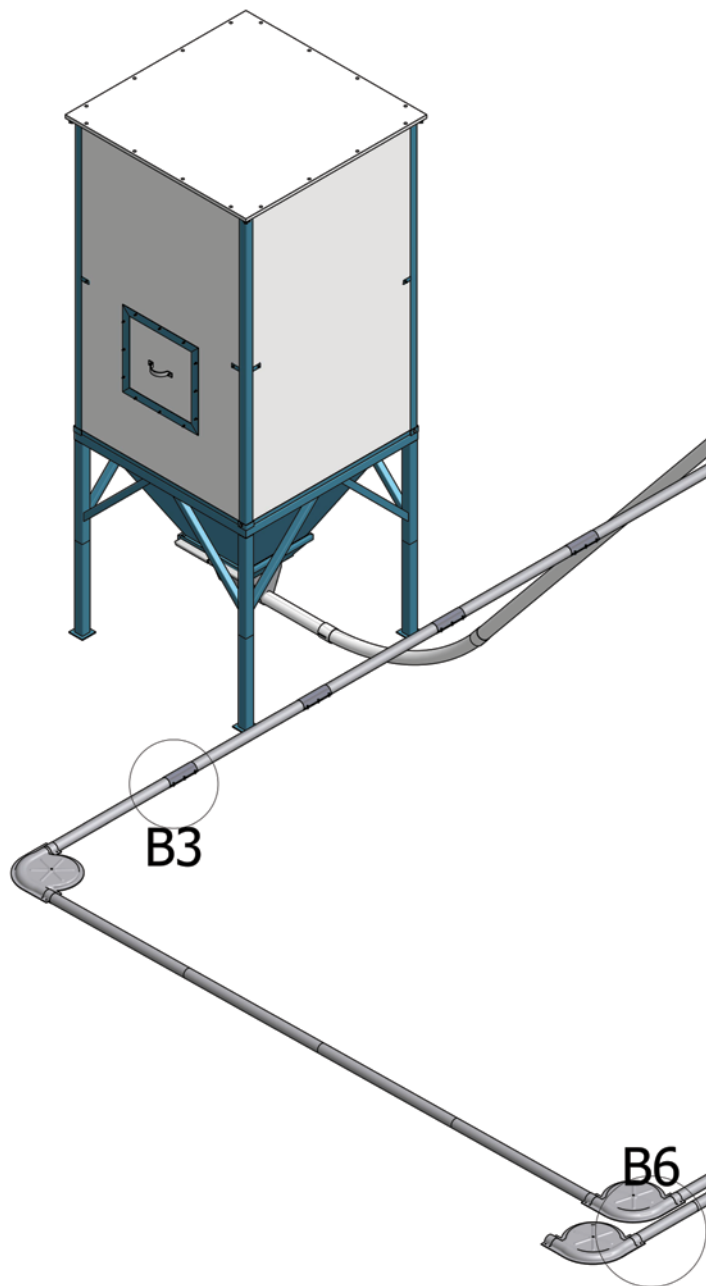
B6 - Support for double downpipe



B6 2 - Double transport system

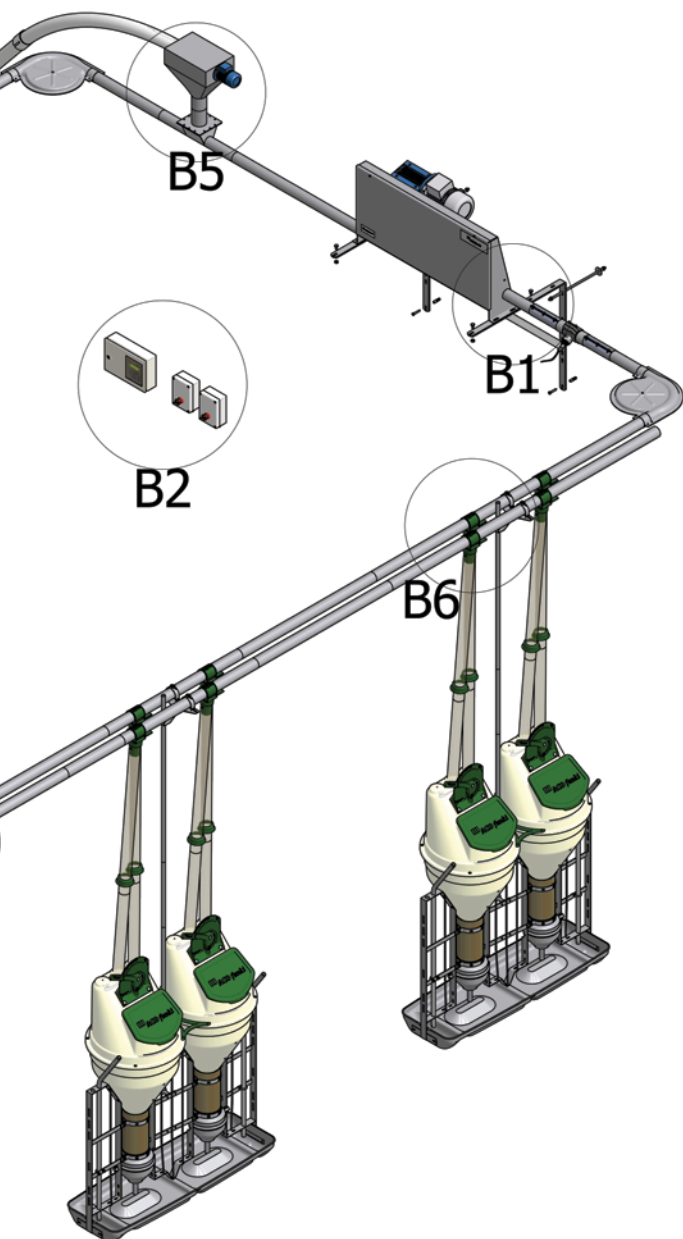
ACO Funki

Model B



M-1023-6

ACO Funki



M-1023-7

Description for dryfeeding system

General description

- Location of the drive unit is recommended on the return side.
- The drive unit is mounted at least 2 meters from the corner.
- Mounting brackets must be mounted with max. 3 meters between them.
- Stop sensor is mounted at least 2 meters from the corner.
- If there are "Sandwich panel" walls it must be mounted with trough-going bolts.
- If the feeding is "lifting" of the system, the feeding pipes must be installed in max. 60°

Procedure

1. Find the location of the drive unit.
 - Mounting on wall or floor.
2. Mounting the drive unit pulling side must be at least 2 meters from the corner.
3. The drive unit we recommend on the return side, but can also be mounted in the middle of the feeding system.
4. Location of the reception unit under the silo.
5. Mounting of support for feeding pipe.
 - These must be mounted with max. 3 meters between them.
6. Mount 90° corner and sensor pipe.
7. Mount VD5, VD2 or FunkiMat.
8. Mount FunkiFeed and Stop sensor.
 - Stop sensor must be mounted at least 2 meters from the corner.
9. Starting the feeding system.