

USER MANUAL



PRO-DOS



ACO FUNKI A/S
Kirkevænget 5
DK-7400 Herning

Tel. +45 9711 9600
www.acofunki.com
www.egebjerg.com

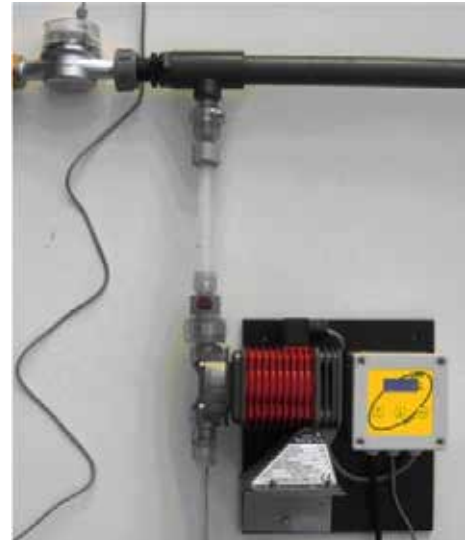
OPERATING INSTRUCTIONS

Capacity:

Type 15:
Dosage 0.01-9.99 max 15 liters dosed/hour
(Max 0.5% at 3000 litres/hour) Max water pressure: 3.5 Bar.

Installation & starting:

- 1) Water meter with injection valve is inserted on the water line in which dosing is desired.
- 2) A pressure hose is led from the pump outlet (out) to the injection valve at the water meter. (Ring is fastened with a hand - avoid tools).
- 3) Mount suction hose (suction filter must not be removed).
- 4) Install the return hose.
- 5) Plug the gray pulse wire into the water meter.
- 6) The dosing unit is connected to power.
- 7) Starting: Set mixing %. Manual suction by pressing "CLR" + "up arrow" at the same time. Air vent screw is loosened when suctioning.



Pro-Dos 15

Control operation:

"UP/DOWN" arrow sets mixing %

"CLR" 0-setting water meter.

If the alarm text shows "Overflow", it indicates that the pump's capacity has been exceeded. (Increase concentration or decrease flow/dosage).

Menu:

For adjusting the pulse for the water meter, as well as correcting the dosage:

- Press both arrows simultaneously for approx. 10 sec. The text "PPL" (water meter pulses/l) (standard 1 pulse per liter) and program version (e.g. 2.6) appear.
- PPL is changed with the arrow keys, approved with "CLR".
- By pressing "CLR" the text appears: "PUMP COR" here the pump can be fine-tuned with the arrows, adjustment is approved again with "CLR".



Pro-Dos styring

Extra equipment:

As an extra equipment, an empty detector can be installed which stops the pump and prevents unnecessary wear on pump parts.

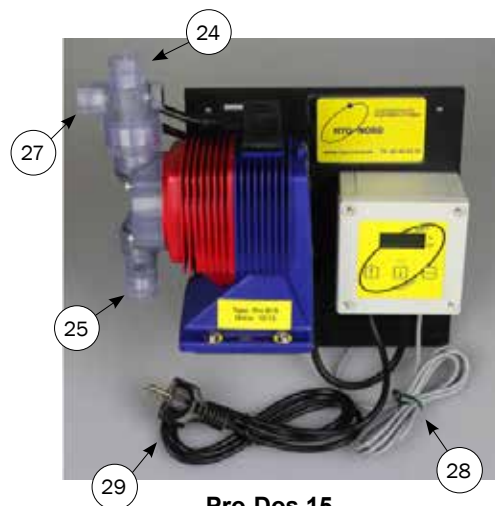
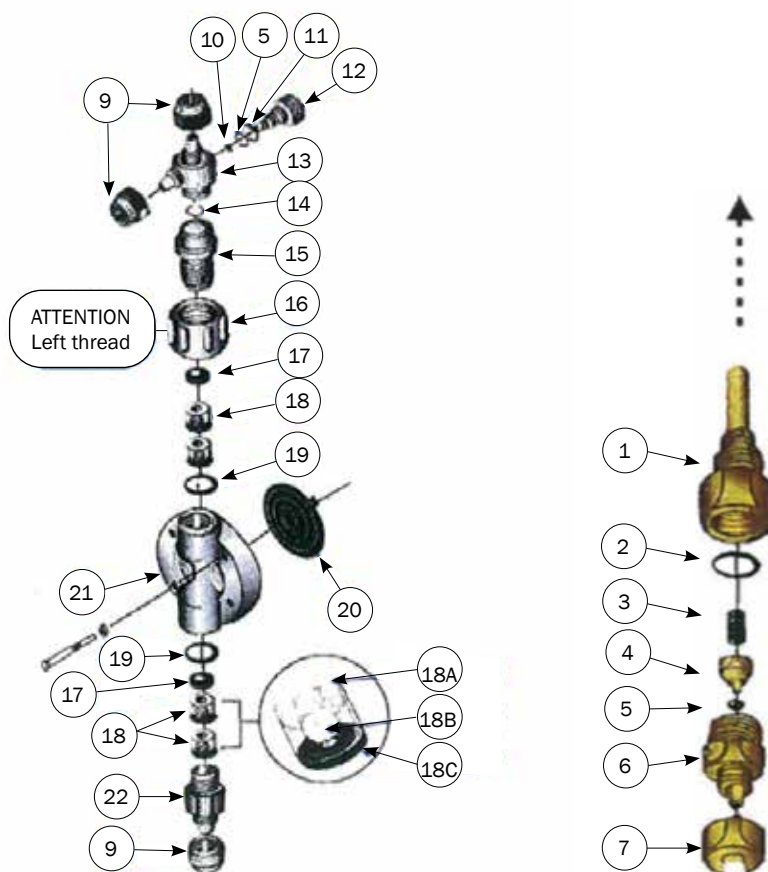
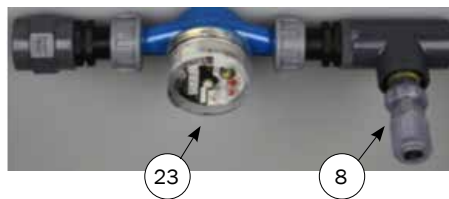
Important:

All plastic parts on back pressure valve, pump housing, etc. is supplied as standard in PVC, no guarantee is given if chemicals etc. are used, which attacks PVC. Eg. Surprime 2000.

Remember not to mix chemistry!

OVERVIEW

Spare parts for Pro-Dos	
Pos.	Description
1	Housing for back pressure
2	O-ring viton
3	Spring
4	Valve
5	O-ring viton
6	Body for valve house
7	Sleeve for hose connector
8	Modtryksventil
9	Sleeve for hose connector 9x12 mm
10	O-ring viton
11	O-ring viton
12	Vent screw
13	Vent housing
14	O-ring viton
15	Screw connection for exhaust air
16	Round for screwing
17	Teflon disc
18	Complete valve set
18A	Valve housing
18B	Valve ball
18C	Valve seat virton
19	O-ring viton
20	Membrane (epdm)
21	Pump housing PVC
22	Hose connector
23	Water meter
24	Press Exit
24A	Pressure hose
25	Suction hose access
25A	Suction hose
26	Return hose
27	Vent
28	Water meter cable
29	Mains cable



Pro-Dos 15

