



BABY CARE

AUTOMATIC MILK FEEDING SYSTEM



- Automatical distribution of milk to the farrowing pens
- 1-2 more piglets per sow in the litter
- Up to 1 kg higher weight at weaning
- Less need for extra nursing sows
- Less need to move the piglets
- Lower infection risk
- Automatic cleaning program

| BABY CARE |

Automatic milk feeding system for distribution of fresh milk to the piglets



BABY CARE MILK FEEDING SYSTEM

Ensures that all piglets have enough milk. When the piglets have constant access to milk, it results in a higher weight at weaning.

When the piglets are 1 kilo heavier at weaning, they have a faster growth after weaning and this gives a higher survival rate.

- 1-2 more piglets per sow in the litter
- Up to 1 kg per pig at weaning
- Higher survival rate
- Less medicine consumption
- Good hygiene
- Fewer nursing sows



With the Baby Care milk feeding system, we get more weaned piglets per sow. They are in average 1 kg heavier, because they always have access to fresh milk.

Furthermore, we have reduced our medicine consumption by 30%. The pigs are in general very active and healthy.

The system is 99% automatic."

Nicolai Greffe!
Isgård Gods Pig Production ApS, Denmark
900 sows

| WHAT IS BABY CARE |

Ready to use unit - just connect water and milk powder silo

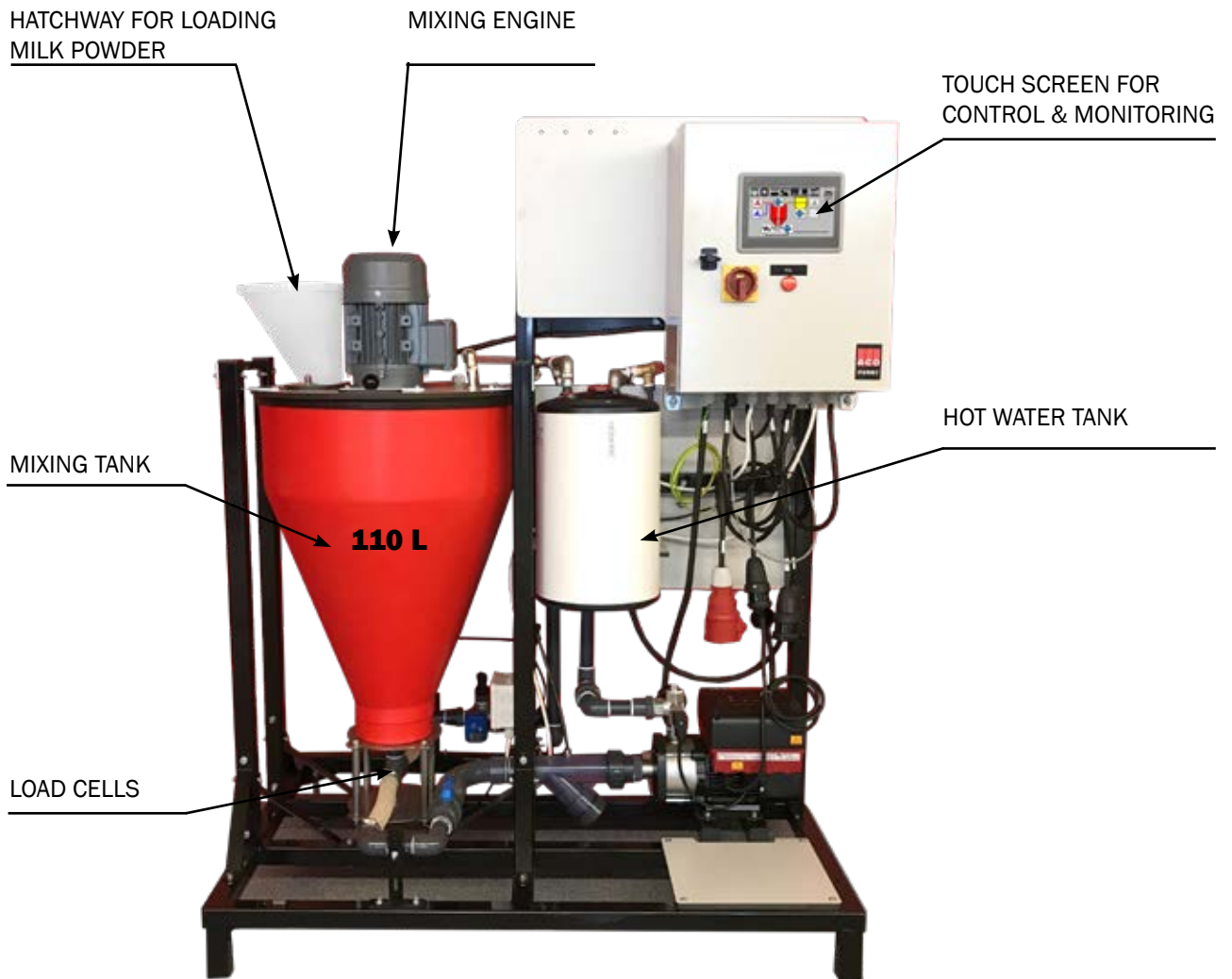
BABY CARE is an automatic milk feeding system that distributes fresh milk in a farrowing unit all day.

The system mixes the milk powder with hot water, and then adds cold water to get the right temperature.

The system has an automatic milk demand control and can be set to mix small portions of milk.

FACTS ABOUT BABY CARE:

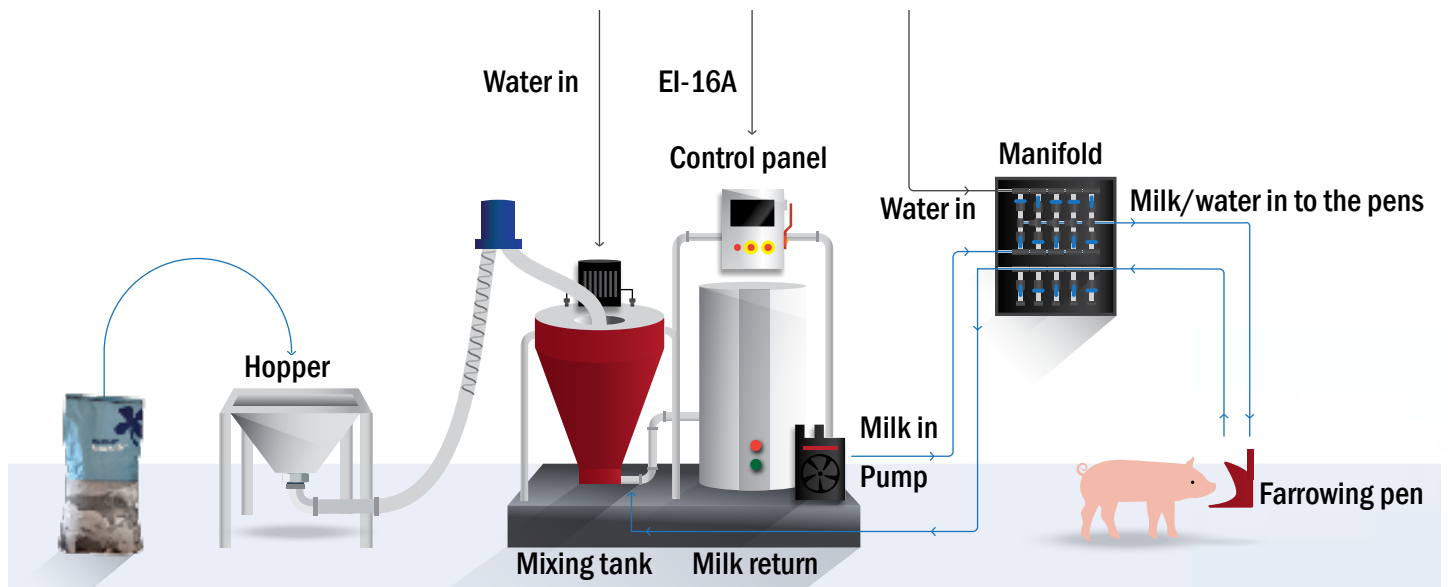
| | |
|----------------------------|---------------------|
| Mixing tank capacity | 110 L |
| Capacity | 700 farrowing pens |
| Drinking cups | Max 50 per circuit |
| Milk temperature | Approx. 20°C |
| Milk powder consumption | 130 g/1 liter water |
| Adjustment of the recepies | Via Touch screen |



| OPERATION PRINCIPLE |

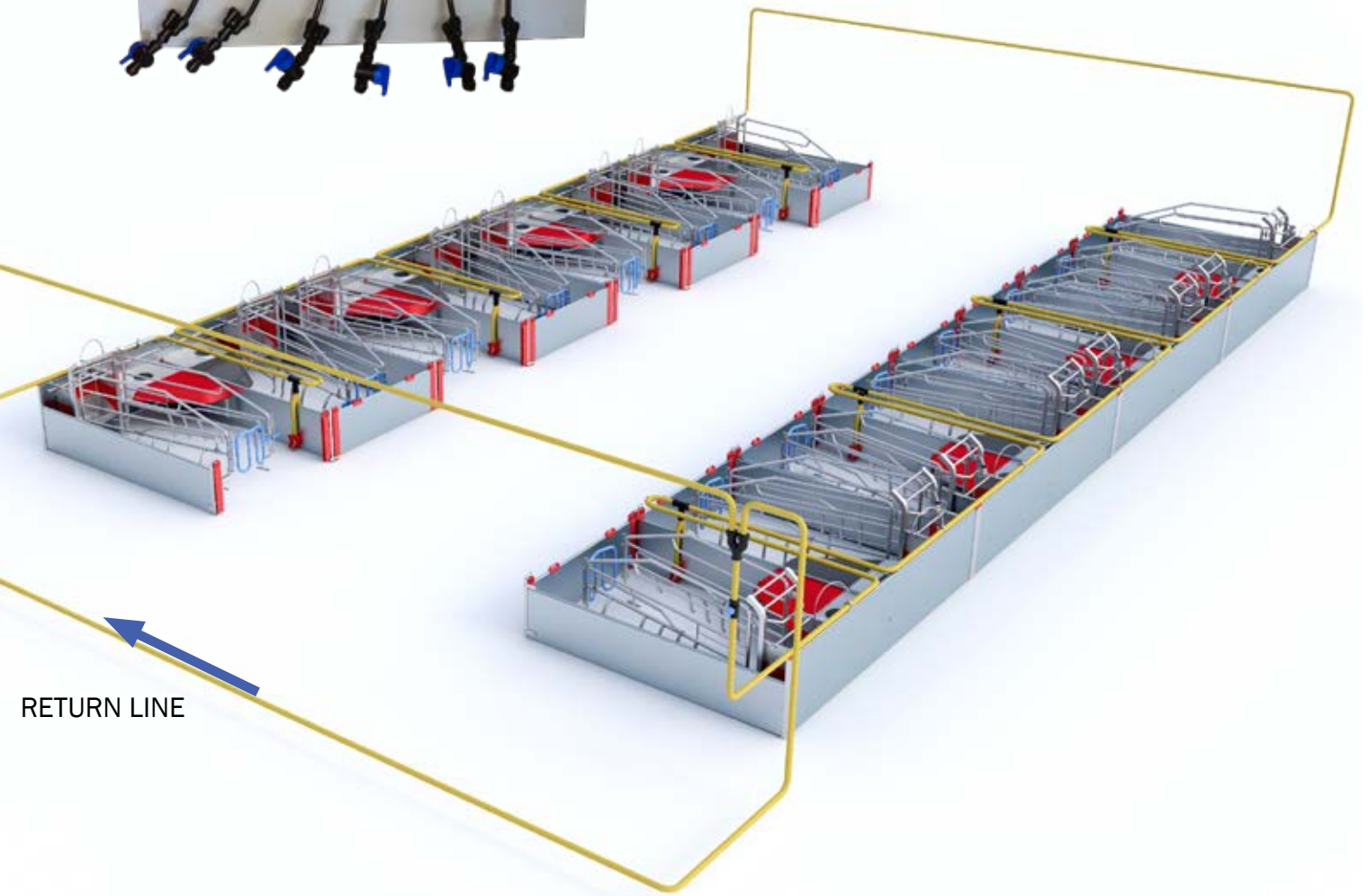
Simple piping

In the corridor between farrowing departments, there is one forward line and one return line. There are manual valves to select either Water or Milk for the piglets. Besides, there are valves for circuit cleaning.



| OPERATION PRINCIPLE |

6 circuits



| DRINKING CUPS |

Can be used for both milk and water



VIP-O-MAT DRINKING CUPS

Drinking cups can be used for both milk and water.

The cups are very easy to clean, which is why they are recommended to use for the milk system.

- Solid and hygienic combination in strong and easy to clean plastic and stainless steel
- The bottom plate can be tilted for emptying and cleaning
- Easy assembly



BABY CARE HELPS REDUCE THE NUMBER OF NURSING SOWS

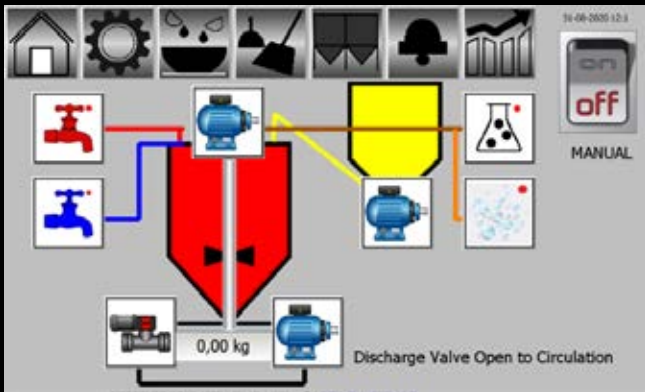
When the amount of piglets per litter is increased, it is important to ensure that all the piglets get access to enough milk in order to reduce the mortality.

Baby Care supplies extra milk, so the piglets can drink both the sow's milk and the milk powder.

It means you avoid having extra nursing sows, and thus reduce the amount of farrowing pens, your production costs and save man-hours.

TOUCH SCREEN

Simple control and operation



TOUCH COLOR DISPLAY

It is always possible to find the consumption of milk powder, water, soap and acid via the corresponding touch screen.

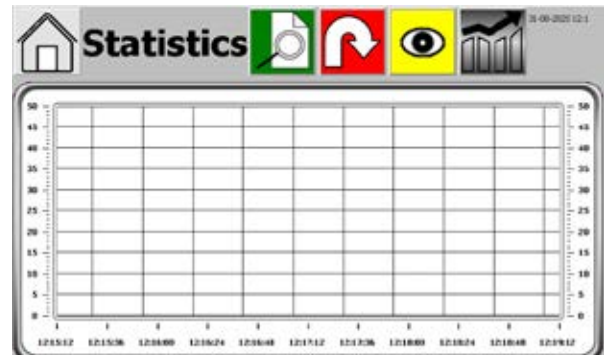
Touch color display enabling all operations with your finger tip.

Adjustment of recipe depending on the piglets' needs.

Alarm output, for silo empty, and less consumption than yesterday.

Recipe settings

Batch weight: 0 kg
Recipe 1: 130 gr per kg
Blending time: 120 sec
Periodic mixing every: 600 sec
Time out when milk silo is empty: 120 sec



Alarm Management

| State | Active Time | Text |
|-------|-------------|------|
|-------|-------------|------|

Active: 0 Inactive: 0 Ack: 0 Normal: 0 Disabled: 0 [0 / 0]
Ack Selecte Clear

Cleaning programmes

| Acid washing | Soap washing |
|--------------|--------------|
| Monday | Monday |
| Tuesday | Tuesday |
| Wednesday | Wednesday |
| Thursday | Thursday |
| Friday | Friday |
| Saturday | Saturday |
| Sunday | Sunday |

Silo Management

奶 (Milk) 0,00 kg
酸 (Acid) 0,00 kg
皂 (Soap) 0,00 kg

→ 0 ←

Settings

Max mix weight: 0 kg
Min mix weight: 0 kg
Min weight before newmix: 0 kg
Weight calibration: 0,00 kg
Pipe length: 1234 m
Pipe diameter: 0 mm

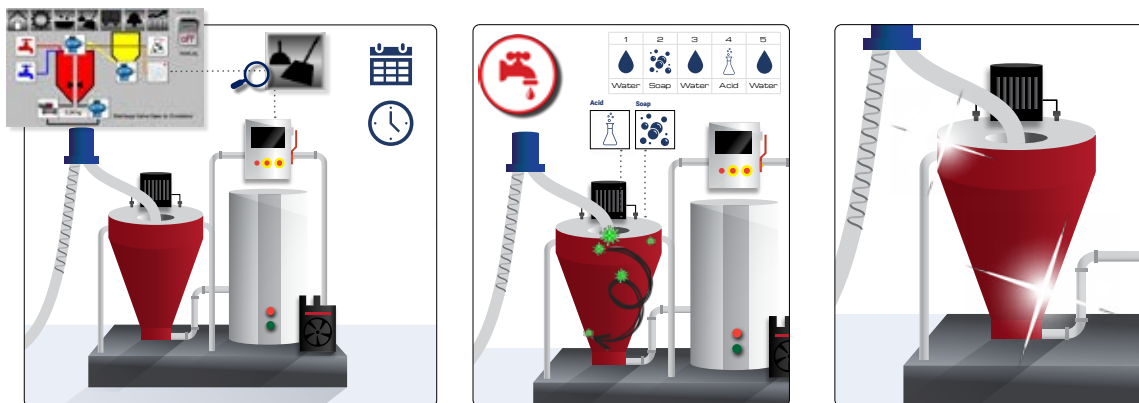
| REGULATE MILK CONSUMPTION |

Individual control of milk supply per pen

Cleaning of tank at each mixture



Automatic cleaning procedure



DANISH DESIGN | GERMAN QUALITY | GLOBAL EXPERIENCE



Subject to changes in materials and design is reserved.

B-8031-GB

ACO FUNKI A/S
Kirkevænget 5
DK-7400 Herning
T. +45 9711 9600
www.acofunki.com

