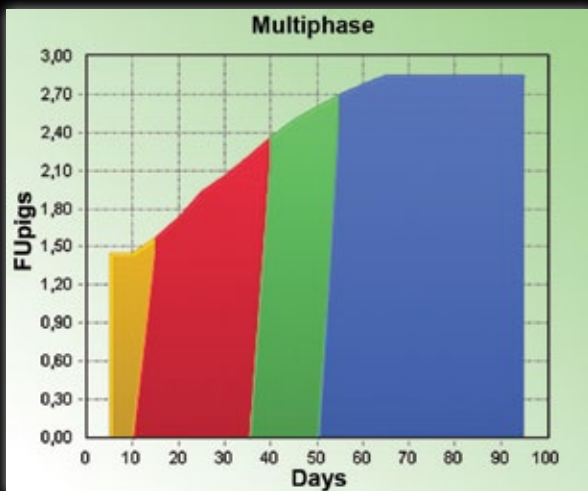




FUNKINET DRY MULTI

Multi-phase feeding with sliding feed change

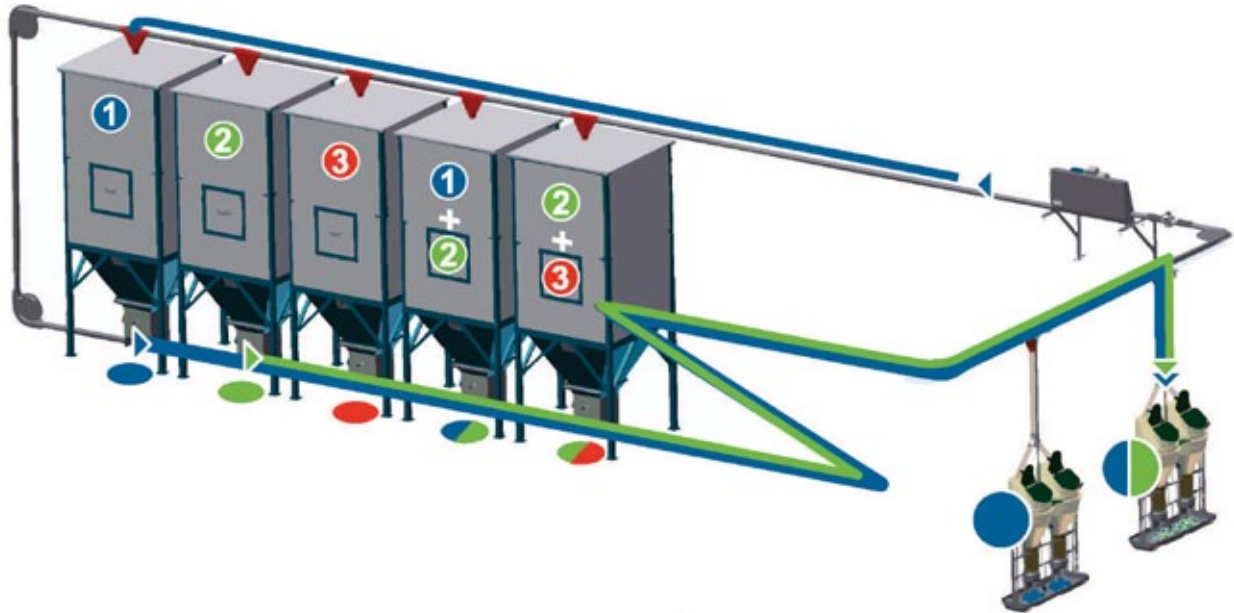
- Large capacity
- Sliding feed change
- Higher feed intake
- Lower feed costs
- Less nitrogen and phosphorus emission
- Reliable system
- Easy to operate



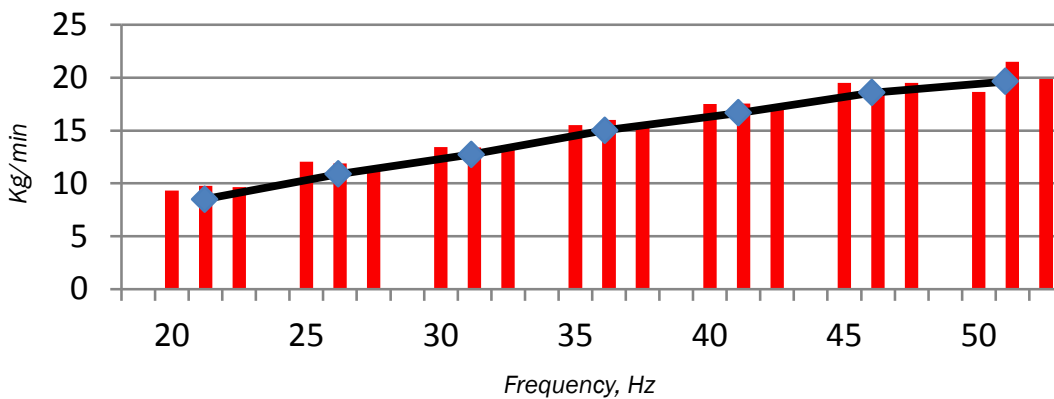
| FUNKINET DRY MULTI |

Multi-phase feeding with sliding feed change...

With FunkiNet Dry Multi it is now possible to make the sliding change between the feed mixes. The pigs get feed according to the multi-phase feeding curves, and the sliding feed change is done by the reception unit or flexible auger while the silo is speed controlled, so that the feed mixes are mixed in the feed tubes. The system has high capacity since it makes the mixture done before switching to the next mixture.



Drive capacity of the reception unit 60 mm, kg/min*



Test results of drive capacity for the reception unit 60 mm and average, kg/min

Frequency, Hz	20	25	30	35	40	45	50
Kg/min	9,34 9,77 9,64	12,07 11,89 11,40	13,44 13,38 13,60	15,50 16,00 15,50	17,52 17,55 17,07	19,48 18,90 19,50	18,65 21,50 19,85
Average, kg	9,50	11,75	13,50	15,65	17,20	19,02	20,02

* Test results are for guidance only.

The reception unit is the heart of the feeding system and is crucial for the life span of the chain or wire. The reception unit controls how even and how much feed is dosed into the feed string.

Subject to changes in materials and design is reserved.

B-1033-GB



ACO FUNKI A/S
Kirkevænget 5
DK-7400 Herning
T. +45 9711 9600
www.acofunki.com

