



Aquaspeed

Aqua Speed fittings is a push-fit system that are suitable for all piping in smaller dimensions, including water installations. Aqua Speed fittings are used without tools or glue, which ensures quick installation and the possibility of trouble-free dismantling.

O-ring in Aqua Speed fittings provide instant a 100% close session while the teeth of stainless steel ensures a safe and feature solid collection.

When removing the outer ring of fittings, just press, after which the pipe can be pulled out of the sleeve. Aqua Speed fittings can then be naturally recycled.

Materials: Polysulphan and stainless steel
 Working pressure: Max. 12 bar at 20 ° C
 Standards: BS7291-1/3-classS,
 KIWA K12448

Aqua Speed should not be used for gas, oil and compressed air.

ACO Funki

AQUASPEED WATERSYSTEM 15 MM

23900500 -
PE-hose - lbm.



2900460 -
Pipe hanger w/screw
and dowel



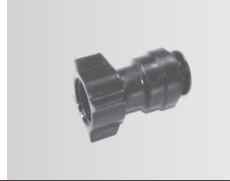
23900502 -
Bend 90°



23900503 -
Connection for 1/2" -
outside thread



23900504 -
Connection for 1/2" -
inside thread



23900505 -
End cap



23900506 -
Angle insert 90°



23900507 -
Connector



23900508 -
T-piece 15 mm



23900527 -
T-piece 15/10/15 mm



23900509 -
Stopcock



23900510 -
Shears for hose



76200023 -
Cable tie 300x4,8 mm



AQUASPEED WATERSYSTEM 10 MM

23900529 -
PE-hose - lbm.



23900523 -
Connection for 1/2" -
outside thread



23900524 -
Connection for 1/4" -
inside thread



23900525 -
Connection for 1/2" -
inside thread



23900528 -
Connector



23900533 -
Y-piece 10 mm



23900526 -
T-piece 10 mm



23900534 -
Connection 10 mm (hose)
x 15 mm



23900510 -
Shears for hose



76200023 -
Cable tie 300x4,8 mm

